

**Clinical Information Support System**

## **Patient-Centered Management Module (PCMM)**

**PCMM Web-VistA Installation Guide**



**November 2015**

**Documentation Version 1.4**

**Office of Information and Technology  
Enterprise Systems Engineering  
Project Management Office**



## Revision History

Date	Version	Description	Author
November 2015	1.4	Minor edits. Updated determine disk space for extracts and file backups.	REDACTED
October 2015	1.3	Added VistA Patch Rollback instructions.	REDACTED
June 2015	1.2	Updated Patch descriptions	REDACTED
March 2015	1.1	Technical edit.	REDACTED
October 2014	1.0	Initial document.	REDACTED

## Table of Contents

<b>1. Background</b>	<b>1</b>
1.1. Purpose	1
1.2. Scope	1
1.3. Pre-Requisite Considerations	1
<b>2. Patch SD*5.3*620 – PCMM Web Data Extracts</b>	<b>2</b>
2.1. Data Extract Instructions	2
2.2. Assign PCMM DATA EXTRACTS Security Key	3
2.2.1. Determine Extract File Space Requirement	5
2.3. Execute Data Extract Routines	6
2.4. FTP Extract Files	8
2.5. Validate Extract Files After FTP	11
<b>3. SD*5.3*603 – PCMM Web Legacy Changes</b>	<b>11</b>
3.1. Pre-Requisites Considerations	11
3.2. Pre-Installation Instructions	12
3.2.1. Assign XUMGR Security Key	12
3.2.2. Determine PCMM Global Backup Space Requirement	13
3.2.3. Backup PCMM Files	13
3.2.4. Check Audited Fields	14
3.3. Installation Overview	16
3.4. Installation Instructions	16
3.5. Post-Installation Instructions	17
3.5.1. Validate Application Proxy User	17
3.5.2. Standard Position Cleanup	18
3.5.3. Turn Auditing On (If Applicable)	19
3.5.4. Add Web Service Username and Password	19
3.5.5. PCMM Web Application Installation	21
3.5.6. Delete Post Installation Processing Routines	21
3.5.7. Install OR*3.0*387	21
3.5.8. Remove Legacy PCMM GUI from User Computers	21
3.5.9. Recovery Steps	21
<b>4. Patch OR*3.0*387 – PCMM Web Team Display Enhancements to CPRS</b>	<b>23</b>
4.1. Installation Overview	23
4.2. Pre-Installation Instructions	23
4.3. Installation Instructions	23
4.4. Post-Installation Instructions	24

<b>5. Patches WEB 1*1 and WEB 1*2 Installation .....</b>	<b>24</b>
<b>6. PCMM Web VistA Patch Rollback .....</b>	<b>24</b>
6.1. Patch SD*5.3*603 .....	24
6.2. Patch SD*5. 3*620 .....	25
6.3. Patch OR*3.0*387 .....	25
6.4. WEBP*1*1 .....	25
6.5. WEBP*1*2 .....	25
6.6. Additional Information and Example.....	26
Backing Up Transport Globals.....	26
<b>7. Appendix A – Patch Description WEB*1*1 .....</b>	<b>29</b>
<b>8. Appendix B – Patch Description WEB*1*2 .....</b>	<b>31</b>
<b>9. Appendix C – Patch Description SD*5.3*620 .....</b>	<b>34</b>
<b>10. Appendix D – Patch Description SD*5.3*603 .....</b>	<b>38</b>
<b>11. Appendix E – Patch Description OR*3.0*387 .....</b>	<b>49</b>
<b>12. Appendix F – Sample Install Record SD*5.3*620 .....</b>	<b>52</b>
<b>13. Appendix G – Sample Install Record SD*5.3*603 .....</b>	<b>54</b>
<b>14. Appendix H – Sample Install Record OR*3.0*387 .....</b>	<b>57</b>
<b>15. Appendix I – Check HealtheVet Web Service Client (HWSC) Configuration .....</b>	<b>58</b>



# 1. Background

This is the Patient-Centered Management Module Web Installation Guide. This guide contains step-by-step instructions for installing the VistA patches required to support the PCMM Web application.

The following patches are available with this release:

PCMM Web Informational Patch:

- WEBP\*1\*1 - Patient-Centered Management Module (PCMM) Web

VistA Patches:

- SD\*5.3\*620 – PCMM DATA EXTRACTS (Release April 2015)
- SD\*5.3\*603 – PCMM WEB LEGACY CHANGES
  - The VistA software for this patch is released as a KIDS host file. It may be downloaded from a secured FTP site as directed by the PCMM Web Implementation Team.
- OR\*3.0\*387 – PCMM WEB TEAM DISPLAY ENHANCEMENTS TO CPRS
  - The VistA software for this patch is released as a KIDS host file. It may be downloaded from a secured FTP site as directed by the PCMM Web Implementation Team.

---

**NOTE:** These patches are to be staggered when implementing into production and not to be installed all at once. This installation includes a Data Migration and that must be executed separately on the PCMM Web server in between the installation of SD\*5.3\*620 and SD\*5.3\*603. A CPRS Header Update job must be executed on the PCMM Web server between the installation of SD\*5.3.603 and OR\*3.0.\*387. The installation of all patches must be coordinated between VistA and PCMM Web.

---

## 1.1.Purpose

The purpose of this Installation Guide specifies how the Patient-Centered Management Module web application will be evaluated and subsequently deployed within the Office of Enterprise Development (OED).

## 1.2.Scope

The scope of this plan encompasses the PCMM Web application, and related responsibilities. The plan specifies:

- a. Pre-requisites for installing PCMM Web and PCMM Data Extracts.
- b. Acceptance – a decision to manage the risk as falling within an acceptable risk tolerance range.

## 1.3.Pre-Requisite Considerations

The following are pre-requisite considerations for the PCMM Web application installation:

- Verify the user installing the PCMM Web has access to the National Patch Module and Forum to retrieve patches.
- The user knows how to install VistA Patches.
- The user knows how to retrieve files from the Host File System (HFS).

- The user has knowledge of Linux or VMS systems.
- The user must have the XUMGR and XUPROGMODE security keys.
- The user will execute the extract options on the “back-end” database server, where applicable.
- Executing the extract routines requires access to the Caché (M) command line. (programmer prompt).
- Executing patch SD\*5.3\*603 requires access to the Caché (M) command line (programmer prompt).

## 2. Patch SD\*5.3\*620 – PCMM Web Data Extracts

On April 9, 2015 (compliance date), Patch SD\*5.3\*620 was released. Therefore, all sites should have installed Patch SD\*5.3\*620 into production. This patch introduced menu options that will be used to extract PCMM data from the site’s local Vista system. During deployment, each site is expected to FTP the extract files to the PCMM Web project team. These files will be used to perform data validation during PCMM Web Deployment.

---

**IMPORTANT: DO NOT run the Post Installation instructions in this patch on the Production System until the site is scheduled to begin the PCMM Data Mitigation process. Each site will be scheduled for deployment and will receive notification from the Implementation Manager indicating the planned deployment date. In addition, the extraction menu options in the SD\*5.3\*620 patch should not be executed before the Data Validation process begins.**

---

- Each site will be contacted by the PCMM Implementation Manager to schedule PCMM Data Mitigation.
- This patch may be installed with users on the system. This patch should take less than 5 minutes to install.
- The file extract processing may be system resource intensive. It is recommended to schedule the post installation steps for non-peak hours.

### 2.1.Data Extract Instructions

These steps are executed once the site is scheduled for PCMM Web deployment. The steps below are preparation for data migration efforts. All sites are required to participate in the data migration prior to going live with the PCMM Web application. The Implementation Manager will schedule your site for deployment and schedule the Data Extract date. Legacy PCMM users must be off the system and complete with data entry during the data migration.

---

**NOTE: DO NOT run the extract options detailed on your Production system until your site has been scheduled to begin the PCMM Data Mitigation process and deployment. An Implementation Manager will contact your site to schedule the PCMM Data Migration.**

---

- You may test the extract functionality in your site’s Test Account, but do not perform the FTP steps in section 2.5. On the test systems, extracts can run at any time to verify functionality.
- Execute the extracts on the “back-end” database server (i.e., ecp node), where applicable, by staff with Caché (M) command line (programmer prompt) access and privileges (i.e., programmer mode access).



- The extract processing may be system resource intensive because Patient Team Assignment Extract and Patient Team Position extracts will be extracting all patients assigned to a PCMM Team. This process may take a substantial amount of time to complete due to the large file sizes. Ensure that the site's system has enough space to support storage of these files.

Estimated Extract File sizes. The timing will vary site to site.

SIZE	STN	FILE_NAME	TIMING
50MB - 85MB	<SITE#>	_PCMMPATIENTTEAMASSIGNMENT.TXT	4 - 12 HOURS
45MB - 80MB	<SITE#>	_PCMMPATIENTTEAMPOSITIONASSIGNMENT.TXT	4 - 12 HOURS
685KB - 1.5MB	<SITE#>	_PCMMPOSITIONASSIGNMENTHISTORY.TXT	2 - 10 MINUTES
145KB - 290KB	<SITE#>	_PCMMPRECEPTORASSIGNMENTHISTORY.TXT	2 - 10 MINUTES
30KB - 40KB	<SITE#>	_PCMMTEAMHISTORY.TXT	2 - 10 MINUTES
300KB - 400KB	<SITE#>	_PCMMTEAMPOSITIONHISTORY.TXT	2 - 10 MINUTES
495KB - 610KB	<SITE#>	_PCMMTEAMPOSITION.TXT	2 - 10 MINUTES
35KB - 40KB	<SITE#>	_PCMMTEAM.TXT	2 - 10 MINUTES

- It is recommended to perform this extract during non-peak hours.
- The extract should run after all PCMM Legacy users are logged off the system.
- Run on the last business day before your scheduled installation/deployment date and schedule the extract for non-peak hours. Users should cease data entry in PCMM Web prior to the extract. If data entry is still in progress, some data may not be captured in the extract and may not be included in data migration.

---

**NOTE: DO NOT RUN the extract options until the site has been scheduled to begin data migration.** The implementation coordinator will contact the site with the scheduled date for data migration and additional assistance.

**The Patient Team Assignment Extract makes a copy of all patients assigned to a PCMM Team. This process will take a while due to the size of the extract. Additionally, this applies for the Patient Team Position Assignment Extract.**

---

Complete the following three steps to perform the data extracts for PCMM data

1. Assign the PCMM DATA EXTRACTS Security Key to yourself or the user who will be performing the extract.
2. Determine extract file space requirement.
3. Execute the data extract options.
4. FTP the extract files.

## 2.2.Assign PCMM DATA EXTRACTS Security Key

The user that runs the extracts will need the PCMM DATA EXTRACTS Security Key. The security key must be assigned before the extract files can be created.

Use the Menu Management option:

```

      Core Applications ...
      Device Management ...
FM    VA FileMan ...
      Manage MailMan...
      Menu Management ...
      Programmer Options ...
      Operations Management ...
      Information Security Officer Menu ...
      TaskMan Management ...
      User Management ...
HL7   HL7 Main Menu ...
VDEF  VDEF Configuration and Status ...
      Application Utilities ...
      Capacity Planning ...
      FileMan Access for the OIG ...
```

Select Systems Manager Menu <TEST ACCOUNT> Option: **Menu Management**

```

      Edit options
      Key Management ...
      Secure Menu Delegation ...
      Restrict Availability of Options
      Option Access By User
      List Options by Parents and Use
      Fix Option File Pointers
      Help Processor ...
OPED  Screen-based Option Editor
      Display Menus and Options ...
      Menu Rebuild Menu ...
      Out-Of-Order Set Management ...
      See if a User Has Access to a Particular Option
      Show Users with a Selected primary Menu
```

Select Menu Management <TEST ACCOUNT> Option: **Key Management**

```

      Allocation of Security Keys
      De-allocation of Security Keys
      Enter/Edit of Security Keys
      All the Keys a User Needs
      Change user's allocated keys to delegated keys
      Delegate keys
      Keys For a Given Menu Tree
      List users holding a certain key
      Remove delegated keys
      Show the keys of a particular user
```

Select Key Management <TEST ACCOUNT> Option: **Allocation of Security Keys**

Allocate key: **PCMM DATA EXTRACTS**      enter the security key name

Another key:

Holder of key: <User Name> enter the user's name

Another holder:

You've selected the following keys:

PCMM DATA EXTRACTS

You've selected the following holders:

<User Name>

You are allocating keys. Do you wish to proceed? YES//

PCMM DATA EXTRACTS being assigned to:  
<User Name>

If the user was logged on before the key was assigned, log off, and then log on again. A user's security keys are determined at logon time.

### 2.2.1.Determine Extract File Space Requirement

Use the following information to determine how much disk space will be required to store the PCMM extract files. The extract files are written to the directory defined as the primary HFS (Host File System) for the site's VistA instance. The name of this directory may be found by executing the following command from the M command line:

```
W $$DEFDIR^%ZISH()
```

Ensure there is sufficient available free disk space on the disk where this directory is located based on the calculation detailed below.

Extract File Name	Source Global Name	Extract Record Size
site PCMMPATIENTTEAMASSIGNMENT.TXT	^SCPT(404.42,	135
site PCMMPATIENTTEAMPOSITIONASSIGNMENT.TXT	^SCPT(404.43,	109
site PCMMTEAM.TXT	^SCTM(404.51,	117
site PCMMPOSITIONASSIGNMENTHISTORY.TXT	^SCTM(404.52,	114
site PCMMPRECEPTORASSIGNMENTHISTORY.TXT	^SCTM(404.53,	141
site PCMMTEAMPOSITION.TXT	^SCTM(404.57,	200
site PCMMTEAMHISTORY.TXT	^SCTM(404.58,	65
site PCMMTEAMPOSITIONHISTORY.TXT	^SCTM(404.59,	73

Run the following commands to determine the record count for each file at the site. The number in red is the record count in each file.

```
CHEYL12>D ^%G
```

Device:

Right margin: 80 =>

Screen size for paging (0=nopaging)? 24 =>

For help on global specifications DO HELP^%G  
Global ^SCPT(404.42,0) -- NOTE: translation in effect  
^SCPT(404.42,0)="PATIENT TEAM ASSIGNMENT^404.42PIA^77123^76507"

Global ^SCPT(404.43,0) -- NOTE: translation in effect  
^SCPT(404.43,0)="PATIENT TEAM POSITION ASSIGNMENT^404.43PI^84688^83574"

Global ^SCTM(404.51,0) -- NOTE: translation in effect  
^SCTM(404.51,0)="TEAM^404.51^1061^1059"

Global ^SCTM(404.52,0) -- NOTE: translation in effect  
^SCTM(404.52,0)="POSITION ASSIGNMENT HISTORY^404.52PIA^2316^1972"

Global ^SCTM(404.53,0) -- NOTE: translation in effect  
^SCTM(404.53,0)="PRECEPTOR ASSIGNMENT HISTORY^404.53PIA^156^146"

Global ^SCTM(404.57,0) -- NOTE: translation in effect  
^SCTM(404.57,0)="TEAM POSITION^404.57IA^5544^5479"

Global ^SCTM(404.58,0) -- NOTE: translation in effect  
^SCTM(404.58,0)="TEAM HISTORY^404.58PIA^1079^1076"

Global ^SCTM(404.59,0) -- NOTE: translation in effect  
^SCTM(404.59,0)="TEAM POSITION HISTORY^404.59PIA^5364^5301"

To determine the size requirements, multiply the record count by the record size for each file. Add these totals together and then add 25%. The result should be the approximate disk space (in bytes) required for the local storage of the extract files. (For example, divide by 1024 for KB; 1,048,576 for MB.)

This same calculation may be used in Section 3.2.2 Determine Backup File Space Requirement below to calculate disk space needed to backup the PCMM globals.

## 2.3. Execute Data Extract Routines

1. The extract processing may be system resource intensive. It is recommended to schedule this for non-peak hours.
2. The data extract files are stored in the host file default directory on the site's system. This path will display on the screen as the extracts are run. Disk space may be verified before running the extract file using this command:

```
W $ZF(-1,$S($system.Version.GetCompBuildOS()["UNIX":"df -h",
$system.Version.GetCompBuildOS()["VMS": "show device D /unit=byte")),!

```

3. The SCMC PCMM EXTRACT ROUTINES option may be assigned to a user's Secondary Menu Options, and executed from any menu. Or, executed using **D ^XUP** at the Caché command prompt, then enter **SCMC PCMM EXTRACT ROUTINES** at the option prompt.
4. The list of eight extracts will display. Execute each data extract by following the steps below:

- a. The Patient Team Assignment Extract and Patient Team Position Assignment Extract may take several hours to run. DO NOT run the extracts at the same time. It is recommended patient extracts run during non-peak/off hours.
  - b. Run the smaller extracts before the Patient Team Assignment Extract and Patient Team Position Assignment Extract.
5. Extract files should run one at a time to avoid interruption of service or slower response times.

Step 2

VISTA>D ^XUP

Setting up programmer environment  
This is a TEST account.

Terminal Type set to: C-VT320

Select OPTION NAME: SCMC PCMM EXTRACT ROUTINES SCMC PCMM Extract  
Routines

Team File Extract  
Team History File Extract  
Team Position File Extract  
Team Position History Extract  
Patient Team Assignment Extract \*  
Patient Team Position Assignment Extract\*  
Position Assignment History Extract  
Preceptor Assignment History Extract

---

**\*Note: Patient Team Assignment Extract and Patient Team Position Assignment Extract will take the longest. Expect that these two extracts will take several hours.**

---

Select SCMC PCMM Extract Routines <TEST ACCOUNT> Option:

Example:

Select SCMC PCMM Extract Routines <TEST ACCOUNT> Option: Team File Extract

<directory name> will display here

- Repeat these steps for each of the menu options. Eight extract files will be created. Each file name is prefixed with the local site number. FTP the following the extracts to the PCMM Web Data Migration Staging Server.

```
<site#>_PCMMPATIENTTEAMASSIGNMENT.TXT
<site#>_PCMMPATIENTTEAMPOSITIONASSIGNMENT.TXT
<site#>_PCMMPOSITIONASSIGNMENTHISTORY.TXT
<site#>_PCMMPRECEPTORASSIGNMENTHISTORY.TXT
<site#>_PCMMTEAM.TXT
<site#>_PCMMTEAMHISTORY.TXT
<site#>_PCMMTEAMPOSITION.TXT
<site#>_PCMMTEAMPOSITIONHISTORY.TXT
```

## 2.4.FTP Extract Files

---

**NOTE:** The extract files should be transmitted immediately after completion. Before the FTP process, contact the PCMM Web Systems Administrator via email at **REDACTED** and request your Username and Password before sending the files. The Systems Administrator will confirm the files have arrived.

---

- Secure FTP is required to copy the extract files to the PCMM Web Data Migration Staging Server. The FTP extract file location is:

**REDACTED**

**Caché (M) command line:**

---

**NOTE:** 442 is a sample station number and used as an example.

---

```
VISTA>S X=$ZF(-1,sftp_station_<site#>@10.208.148.20)
Connecting to 10.208.148.20...
station_442@10.208.148.20's password: password
sftp> cd jail
sftp> lcd <directory name> (directory where extract files reside, from above)
sftp> mput <site#>_PCMM*.TXT
Uploading ...
sftp> ls -l 442_PCMM*.TXT (check transferred files)
File list ...
sftp> quit
VISTA>
```

### Linux Example

List files

```
VISTA>S X=$ZF(-1, "ls /u06/CHEYL12/442_PCMM*") (directory where extract files reside,
from above
/u06/CHEYL12/442_PCMMPATIENTTEAMASSIGNMENT.TXT
```

```

/u06/CHEYL12/442_PCMPATIENTTEAMPOSITIONASSIGNMENT.TXT
/u06/CHEYL12/442_PCMMPOSITIONASSIGNMENTHISTORY.TXT
/u06/CHEYL12/442_PCMPRECEPTORASSIGNMENTHISTORY.TXT
/u06/CHEYL12/442_PCMMTEAMHISTORY.TXT
/u06/CHEYL12/442_PCMMTEAMPOSITIONHISTORY.TXT
/u06/CHEYL12/442_PCMMTEAMPOSITION.TXT
/u06/CHEYL12/442_PCMMTEAM.TXT
VISTA>

```

## FTP

```

VISTA> S x=$ZF(-1,"sftp station_442@10.208.148.20")
Connecting to 10.208.148.20...
station_442@10.208.148.20's password: password
sftp> cd jail
sftp> lcd /u06/CHEYL12/ (directory where extract files reside, from above)
sftp> mput 442_PCMM*.TXT
Uploading 442_PCMPATIENTTEAMASSIGNMENT.TXT to /jail/442_PCMPATIENTTEAMASSIGNMT
442_PCMPATIENTTEAMASSIGNMENT.TXT      100% 9461KB  4.6MB/s   00:02
Uploading 442_PCMPATIENTTEAMPOSITIONASSIGNMENT.TXT to /jail/442_PCMPATIENTTEAT
442_PCMPATIENTTEAMPOSITIONASSIGNMENT.TXT  100% 7423KB  7.3MB/s   00:01
Uploading 442_PCMMPOSITIONASSIGNMENTHISTORY.TXT to /jail/442_PCMMPOSITIONASSIGNT
442_PCMMPOSITIONASSIGNMENTHISTORY.TXT    100% 171KB 170.5KB/s  00:01
Uploading 442_PCMPRECEPTORASSIGNMENTHISTORY.TXT to /jail/442_PCMPRECEPTORASSIT
442_PCMPRECEPTORASSIGNMENTHISTORY.TXT  100% 14KB  14.2KB/s   00:00
Uploading 442_PCMMTEAM.TXT to /jail/442_PCMMTEAM.TXT
442_PCMMTEAM.TXT                        100%  85KB  85.0KB/s   00:00
Uploading 442_PCMMTEAMHISTORY.TXT to /jail/442_PCMMTEAMHISTORY.TXT
442_PCMMTEAMHISTORY.TXT                 100%  44KB  43.6KB/s   00:00
Uploading 442_PCMMTEAMPOSITION.TXT to /jail/442_PCMMTEAMPOSITION.TXT
442_PCMMTEAMPOSITION.TXT                 100% 631KB 631.4KB/s   00:00
Uploading 442_PCMMTEAMPOSITIONHISTORY.TXT to /jail/442_PCMMTEAMPOSITIONHISTORY.T
442_PCMMTEAMPOSITIONHISTORY.TXT          100% 175KB 175.2KB/s   00:00
sftp> ls -l 442_PCMM*.TXT               check transferred files
-rwxr-xr-x  0 585      502      1327830 Oct 15 16:14 442_PCMPATIENTTEAMASSIT
-rwxr-xr-x  0 585      502      7601008 Oct 15 16:14 442_PCMPATIENTTEAMPOSIT
-rwxr-xr-x  0 585      502      174610 Oct 15 16:14 442_PCMMPOSITIONASSIGNMT
-rwxr-xr-x  0 585      502      14535 Oct 15 16:14 442_PCMPRECEPTORASSIGNT
-rwxr-xr-x  0 585      502      91879 Oct 15 16:14 442_PCMMTEAM.TXT
-rwxr-xr-x  0 585      502      48604 Oct 15 16:14 442_PCMMTEAMHISTORY.TXT
-rwxr-xr-x  0 585      502      646586 Oct 15 16:14 442_PCMMTEAMPOSITION.TXT
-rwxr-xr-x  0 585      502      179384 Oct 15 16:14 442_PCMMTEAMPOSITIONHIST
sftp> quit
VISTA>

```

## VMS Example

### List files

```

VISTA> S X=$ZF(-1, "dir user$:[temp]442_PCMM*.TXT")

```

```

Directory USER$:[TEMP]

```

```

442_PCMPATIENTTEAMASSIGNMENT.TXT;1
442_PCMPATIENTTEAMPOSITIONASSIGNMENT.TXT;1

```

```

442_PCMMPositionAssignmentHistory.TXT;1
442_PCMMPRECEPTORAssignmentHistory.TXT;1
442_PCMMTeamHistory.TXT;4
442_PCMMTeamPosition.TXT;1
442_PCMMTeamPositionHistory.TXT;3

```

Total of 8 files.  
VISTA>

FTP

---

**NOTE: Ensure the sftp “traffic” messages in the Linux example above display or the files will need to be transferred individually.**

---

```

VISTA> S X=$ZF(-1, "sftp station_442@10.208.148.20")
station_442@10.208.148.20's password:
sftp> cd jail
/jail
sftp> lcd USER$:[TEMP]
USER$:[temp]
sftp> mput 442_PCM*.TXT
or
sftp> put 442_PCMMPATIENTTEAMASSIGNMENT.TXT
442_PCMMPATIENTTEAMASSIGNMENT.TXT | 192B | 0.2 kB/s | TOC: 00:00:01 | 100%
sftp> put 442_PCMMPATIENTTEAMPOSITIONASSIGNMENT.TXT
442_PCMMPATIENTTEAMPOSITIONASSIGN | 337B | 0.3 kB/s | TOC: 00:00:01 | 100%
sftp> put 442_PCMMPositionAssignmentHistory.TXT
442_PCMMPositionAssignmentHistory | 387B | 0.4 kB/s | TOC: 00:00:01 | 100%
sftp> put 442_PCMMPRECEPTORAssignmentHistory.TXT
442_PCMMPRECEPTORAssignmentHISTOR | 182B | 0.2 kB/s | TOC: 00:00:01 | 100%
sftp> put 442_PCMMTeam.TXT
442_PCMMTeam.TXT | 324B | 0.3 kB/s | TOC: 00:00:01 | 100%
sftp> put 442_PCMMTeamHistory.TXT
442_PCMMTeamHistory.TXT | 108B | 0.1 kB/s | TOC: 00:00:01 | 100%
sftp> put 442_PCMMTeamPosition.TXT
442_PCMMTeamPosition.TXT | 936B | 0.9 kB/s | TOC: 00:00:01 | 100%
sftp> put 442_PCMMTeamPositionHistory.TXT
442_PCMMTeamPositionHistory.TXT | 152B | 0.1 kB/s | TOC: 00:00:01 | 100%
sftp> ls -l 442_PCM*.TXT
-rw-r--r-- 0 585 502 192 Sep 9 15:07 442_PCMMPATIENTTEAMASSIT
-rw-r--r-- 0 585 502 337 Sep 9 15:08 442_PCMMPATIENTTEAMPOSIT
-rw-r--r-- 0 585 502 387 Sep 9 15:08 442_PCMMPositionASSIGNMT
-rw-r--r-- 0 585 502 182 Sep 9 15:09 442_PCMMPRECEPTORASSIGNT
-rw-r--r-- 0 585 502 324 Sep 9 15:09 442_PCMMTeam.TXT
-rw-r--r-- 0 585 502 108 Sep 9 15:10 442_PCMMTeamHistory.TXT
-rw-r--r-- 0 585 502 936 Sep 9 15:10 442_PCMMTeamPosition.TXT
-rw-r--r-- 0 585 502 152 Sep 9 15:10 442_PCMMTeamPositionHIST
sftp> quit

```

VISTA>



## 2.5. Validate Extract Files After FTP

Once the FTP process is complete, run the following programmer prompt to validate checksum:

```
!md5sum /srv/vista/iro/user/hfs/###_PCMM*
```

## 3. SD\*5.3\*603 – PCMM Web Legacy Changes

---

**NOTE: The SD\*5.3\*603 patch will be installed after the Data Migration team completes the data validation.**

---

The purpose of the SD\*5.3\*603 patch is to install the VistA changes needed to support PCMM Web and to remove all user access for the Legacy PCMM GUI. Additionally, The PCMM NIGHTLY TASK job in TaskMan is no longer needed.

### 3.1. Pre-Requisites Considerations

The following are pre-requisite considerations for the SD\*5.3\*603 patch installation:

1. The installer must logon to the “back-end” database server, where applicable, to install the SD\*5.3\*603 patch.
2. The installer must have access to the Caché (M) command line (programmer prompt).
3. The installer must have the XUMGR security key to create the application proxy user record properly. Also XUPROGMODE and XUAUDITING security keys.
4. The installer should turn on terminal logging to assist in possible trouble-shooting.
5. SD\*5.3\*603 patch may be installed with users on the system and may take 15-20 minutes to install. However, one background process could take several hours to install. A MailMan Message will be sent after the installation is complete.
6. There are several manual post-installation steps to complete. Ensure to follow the steps below.
7. Only the following sites need to perform the Standard Position Cleanup step detailed in the Post-Installation Instructions.

501 – NEW MEXICO HCS  
512 – BALTIMORE MD VAMC  
528 – UPSTATE NEW YORK HCS  
548 – WEST PALM BEACH VAMC  
558 – DURHAM VAMC  
590 – HAMPTON (VAMC)  
598 – CENTRAL ARKANSAS HCS  
614 – MEMPHIS VAMC  
644 – PHOENIX VAMC  
679 – TUSCALOOSA

## 3.2.Pre-Installation Instructions

1. Logon to the “back-end” database (i.e., ecp) server to install the SD\*5.3\*603 patch.
2. Turn on terminal logging to assist in possible trouble-shooting.
3. Assign the XUMGR, XUAUDITING, and XUPROGMODE security keys if not assigned.
4. Determine space requirements for backup of PCMM globals.
5. Backup the globals containing PCMM files. Backup globals during non-peak hours. See Section 2.2.1 Determine Extract File Space Requirement, above, to determine disk space requirement.
6. If auditing is ON for the Outpatient Encounter (409.68) file, complete the following:
  - a. Note which fields are being audited.
  - b. Turn auditing OFF.

### 3.2.1.Assign XUMGR Security Key

Assign XUMGR security key to the user (New Person File) that installs the SD\*5.3\*603 patch, following site procedures for Security Key installations. This key is required to create the application proxy user record.

Use the Menu Management option:

```

      Core Applications ...
      Device Management ...
FM    VA FileMan ...
      Manage MailMan ...
      Menu Management ...
      Programmer Options ...
      Operations Management ...
      Information Security Officer Menu ...
      Taskman Management ...
      User Management ...
HL7   HL7 Main Menu ...
VDEF  VDEF Configuration and Status ...
      Application Utilities ...
      Capacity Planning ...
      FileMan Access for the OIG ...
```

Select Systems Manager Menu <TEST ACCOUNT> Option: **Menu Management**

```

      Edit options
      Key Management ...
      Secure Menu Delegation ...
      Restrict Availability of Options
      Option Access By User
      List Options by Parents and Use
      Fix Option File Pointers
      Help Processor ...
OPED  Screen-based Option Editor
      Display Menus and Options ...
      Menu Rebuild Menu ...
```

Out-Of-Order Set Management ...  
See if a User Has Access to a Particular Option  
Show Users with a Selected primary Menu

Select Menu Management <TEST ACCOUNT> Option: **Key Management**

Allocation of Security Keys  
De-allocation of Security Keys  
Enter/Edit of Security Keys  
All the Keys a User Needs  
Change user's allocated keys to delegated keys  
Delegate keys  
Keys For a Given Menu Tree  
List users holding a certain key  
Remove delegated keys  
Show the keys of a particular user

Select Key Management <TEST ACCOUNT> Option: **Allocation of Security Keys**

Allocate key: **XUMGR**                      enter the security key name

Another key:

Holder of key: **<User Name>**              enter the user's name

Another holder:

You've selected the following keys:

XUMGR

You've selected the following holders:

<User Name>

You are allocating keys. Do you wish to proceed? YES//

XUMGR being assigned to:  
<User Name>

### **3.2.2.Determine PCMM Global Backup Space Requirement**

Refer to See Section 2.2.1 Determine Extract File Space Requirement, above, to determine disk space required to store the PCMM data global backup files.

### **3.2.3.Backup PCMM Files**

Caché (M) command line:

VISTA>**DO ^%G0**

Global output

Device: **<directory name>pcmmBKUPS.gb1**

Parameters? "WNS" =>  
Description (^ for self-loading): PCMM VistA Files

All Globals? No => No  
Global ^SCPT  
Global ^SCTM  
Global ^  
2 globals selected from 456 available globals.  
SCPT SCTM  
2 globals written  
VISTA>

### 3.2.4. Check Audited Fields

Before installing the SD\*5.3\*603 patch, verify if any fields are audited in the Outpatient Encounter File and then turn off auditing. If auditing occurs, the Outpatient Encounter File consumes a large amount of disk space when creating a new ACOD index on the file.

VISTA>D P^DI

VA FileMan 22.0

Select OPTION: ??

Choose from:

1	ENTER OR EDIT FILE ENTRIES
2	PRINT FILE ENTRIES
3	SEARCH FILE ENTRIES
4	MODIFY FILE ATTRIBUTES
5	INQUIRE TO FILE ENTRIES
6	UTILITY FUNCTIONS
7	OTHER OPTIONS
8	DATA DICTIONARY UTILITIES
9	TRANSFER ENTRIES

Select OPTION: 7 OTHER OPTIONS

Select OTHER OPTION: ??

Choose from:

1	FILEGRAMS
2	ARCHIVING
3	AUDITING
4	SCREENMAN
5	STATISTICS
6	EXTRACT DATA TO FILEMAN FILE
7	DATA EXPORT TO FOREIGN FORMAT
8	IMPORT DATA
9	BROWSER

Select OTHER OPTION: 3 AUDITING

Select AUDIT OPTION: ??

Choose from:

1	FIELDS BEING AUDITED
2	DATA DICTIONARIES BEING AUDITED

```

3          PURGE DATA AUDITS
4          PURGE DD AUDITS
5          TURN DATA AUDIT ON/OFF

```

```

Select AUDIT OPTION: 1  FIELDS BEING AUDITED
START WITH WHAT FILE: NEW PERSON// 409.68  OUTPATIENT ENCOUNTER
                                     (4385969 entries)
GO TO WHAT FILE: OUTPATIENT ENCOUNTER//

```

---

**NOTE: If any fields are being audited, a list will display. If no fields are displayed, skip the steps below.**

---

Select AUDIT OPTION:

Example:

In this example, the two fields used to create the Outpatient Encounters ACOD index have auditing turned on.

```

Select AUDIT OPTION: 1  FIELDS BEING AUDITED
START WITH WHAT FILE: OUTPATIENT ENCOUNTER//
GO TO WHAT FILE: OUTPATIENT ENCOUNTER//
DEVICE:  HOME  (CRT)   Right Margin: 80//
AUDITED FIELDS
FILE          NUMBER    LABEL                      TYPE                      SEP 22,2014  17:52  PAGE 1
                                     AUDIT
-----
409.68        .02       PATIENT                   POINTER                   YES, ALWAYS
409.68        .07       CHECK OUT PROCESS CO     DATE/TIME                 EDITED OR DELETED

```

Select AUDIT OPTION:

Make note of the field(s) and audit value(s) to reference when turning auditing back on after the ACOD index completed MailMan message is received.

Turn off auditing

```

Select AUDIT OPTION: 5  TURN DATA AUDIT ON/OFF
AUDIT FROM WHAT FILE: OUTPATIENT ENCOUNTER//
Select FIELD: .02  PATIENT    y
AUDIT: y// NO

```

```

Select FIELD: .07  CHECK OUT PROCESS COMPLETION    e
AUDIT: e// NO

```

Select FIELD:

```

Select AUDIT OPTION: 1  FIELDS BEING AUDITED
START WITH WHAT FILE: OUTPATIENT ENCOUNTER//
GO TO WHAT FILE: OUTPATIENT ENCOUNTER//

```

Select AUDIT OPTION:

### 3.3.Installation Overview

- Download SD\_53\_603.KID file from secure FTP site. The PCMM Implementation Team will provide the site URL and credentials.
- The pre-installation routine will delete the current Standard Position reference file. A new gold version will be created by this installation. The pre-installation routine will be automatically deleted when the install is completed.
- The main installation will update routines, data dictionaries, options, and remote procedure definitions as detailed in the patch description.
- The post-installation routine will:
  - Add or update HWSC server and web service file entries.
  - Add the application proxy user.
  - Convert Patient Team Position Assignment: Status (404.43/.12) from NA to IU. The installation process may pause while this is performed.
  - Un-schedule the legacy PCMM Nightly Task from TaskMan.
  - Place PCMM Legacy Menus out-of-order.
  - Change SCMC PCMM GUI WORKSTATION to SCMC PCMMR WEB USER MENU. The installation process may pause while this is performed.
  - Build the new C cross reference for Patient Team Position Assignment file.
  - Build the new ACOD index for the Outpatient Encounters file. This will be submitted to TaskMan. A MailMan message is sent after the completion of this process.
  - Delete the trigger (FTEXR) on Position Assignment History File (404.52): FTE Equivalent (.09).
  - Create missing ACOD index records in the Outpatient Encounters file
  - Add two records to the Team Purpose file – PRIMARY CARE - NVCC and PRIMARY CARE – HBPC.

---

**NOTE: Depending on the file size and system, building the ACOD index may take an extended time to complete.**

---

Build Outpatient Encounter ACOD Index		
Site	Record Count	Time (h:m:s)
Memphis	22,874,707	~ 1:30:00
Iron Mountain	6,685,573	0:06:08
Portland	24,849,833	11:37:19
Greater L.A.	44,078,860	5:40:02

### 3.4.Installation Instructions

This patch is a part of a phased, coordinated process for deploying PCMM Web. The site will be contacted by the PCMM Web Implementation Team and given credentials to the secure FTP site. The file can then be downloaded to the site.

File Name	Contents	Retrieval Format
SD_53_603.KID	KIDS Build	ascii

1. Download the SD\_53\_603.KID file.
2. From the **Kernel Installation and Distribution System Menu**, select the **Installation Menu**, then the **Load a Distribution** option. At this prompt: Enter a Host File: enter the directory name and file name of the KIDS file;  
  
Example: user\$:[temp]SD\_53\_603.KID  
  
Respond **YES** when prompted to continue
3. From this **Kernel Installation and Distribution System Menu**, you may also select to use the following options.
  - a. **Verify Checksums in Transport Global** – This option will allow you to ensure the integrity of the routines that are in the transport global.
  - b. **Compare Transport Global to Current System** – This option will allow you to view all changes that will be made when this patch is installed. It compares all components of this patch (i.e., routines, DDs, templates, etc.).
  - c. **Backup a Transport Global** – This option will create a backup message of any routines exported with this patch. It will not backup any other changes such as DDs or templates.
4. From the **Kernel Installation and Distribution System Menu**, select the **Install Package(s)** option and choose the patch to install. **Enter SD\*5.3\*603.**
5. When prompted ‘Want KIDS to Rebuild Menu Trees Upon Completion of Install? NO//’ respond **NO**.
6. When prompted ‘Want KIDS to INHIBIT LOGONs during the install? NO//’ respond **NO**.
7. When prompted ‘Want to DISABLE Scheduled Options, Menu Options, and Protocols? NO//’ respond **NO**.
8. If prompted ‘Delay Install (Minutes): (0 – 60): 0//’ respond **0**.

## 3.5.Post-Installation Instructions

1. Validate Application Proxy User.
2. Standard Position Cleanup, if applicable.
3. If auditing was turned OFF for the Outpatient Encounter (409.68) file during Pre-Installation and the MailMan message is received for the ACOD index build, turn auditing ON for the fields that were being audited.
4. The CPRS PC Details web service requires a username and password. Update the Web Service Configuration.
5. Email the PCMM Web development team once the Patch SD\*5.3\*603 installation is complete. Please note the site information in the body of your e-mail. The PCMMR team e-mail address is:

**REDACTED**

### 3.5.1.Validate Application Proxy User

Verify the application proxy user was created correctly using FileMan. Verify one Secondary Menu Options – SCMC PCMMR APP PROXY MENU, and User Class – APPLICATION PROXY (shown below) are included.

VISTA>DO P^DI

Select OPTION: INQUIRE TO FILE ENTRIES

OUTPUT FROM WHAT FILE: NEW PERSON//

Select NEW PERSON NAME: SCMC,APPLICATION PROXY

ANOTHER ONE:

STANDARD CAPTIONED OUTPUT? Yes// (Yes)

Include COMPUTED fields: (N/Y/R/B): NO// BOTH Computed Fields and Record Number (IEN)

DISPLAY AUDIT TRAIL? No// NO

NAME: SCMC,APPLICATION PROXY

DATE ENTERED: FEB 27, 2014

CREATOR: INNIS,JOHN

SECONDARY MENU OPTIONS: SCMC PCMMR APP PROXY MENU

TIMESTAMP: 63278,58937

User Class: APPLICATION PROXY

ISPRIMARY: Yes

PSIM UPDATE USER: INNIS,JOHN

PSIM UPDATE DT: FEB 27, 2014@15:49:11

PROVIDER KEY @: 0

### 3.5.2. Standard Position Cleanup

ONLY the following sites listed below need to complete the standard position cleanup steps:

501 – NEW MEXICO HCS  
512 – BALTIMORE MD VAMC  
528 – UPSTATE NEW YORK HCS  
548 – WEST PALM BEACH VAMC  
558 – DURHAM VAMC  
590 – HAMPTON (VAMC)  
598 – CENTRAL ARKANSAS HCS  
614 – MEMPHIS VAMC  
644 – PHOENIX VAMC  
679 – TUSCALOOSA

---

**NOTE: Only run this routine once, per site listed above. If the routine needs to run again, first restore the backup of the original global. This process will log records changed in the ^XTMP(“SCMCFPOS”) global and retained for 1 year.**

**If a site other than listed above runs the routine, no changes will occur.**

---

Steps:

1. Backup the global:

VISTA>DO ^%GOGEN

Device: <directory name>teampositionbkup.gbl

Parameter“? ””NS” =>



Warning: Use "a" "V" format to avoid problems with control characters.  
Global ^SCTM(404.57  
Global ^  
VISTA>

2. Run the cleanup routine.

---

**NOTE: It is very important to notify the Implementation Manager if this step fails for any reason.**

---

VISTA>DO EN^SCMCFPOS  
VISTA>

3. Delete this routine (SCMCFPOS) upon successful installation of this patch.

### 3.5.3. Turn Auditing On (If Applicable)

If auditing was turned off before this patch was installed, follow steps below to turn it back on. If auditing was not turned on, skip the step below and continue to the 8.5.5 PCMM Web Application Installation section.

After receiving the MailMan message that the ACOD Index build has completed, auditing may be turned back on for the fields that were turned off above.

For the "Select FIELD:" prompt(s) enter the field(s) made note of above.  
For the "AUDIT:" prompt(s) enter the value(s) made note of above.

Select AUDIT OPTION: 5 TURN DATA AUDIT ON/OFF  
AUDIT FROM WHAT FILE: OUTPATIENT ENCOUNTER//  
Select FIELD: .02 PATIENT n  
AUDIT: n// YES, ALWAYS

Select FIELD: .07 CHECK OUT PROCESS COMPLETION n  
AUDIT: n// EDITED OR DELETED

Select FIELD:

Select AUDIT OPTION:

### 3.5.4. Add Web Service Username and Password

Follow these steps to add a username and password to the web service configuration. The password will be supplied by the Implementation Manager.

VISTA>D ^XUP

Setting up programmer environment  
This is a TEST account.

Terminal Type set to: C-VT320

Select OPTION NAME: **XOBW** WEB SERVER MANAGER      Web Server Manager  
Web Server Manager

**Web Server Manager**      Mar 02, 2015@16:58:15      Page: 1 of 1

HWSC Web Server Manager  
Version: 1.0      Build: 31

ID	Web Server Name	IP Address or Domain Name:Port
1	*PCMMR	REDACTED
2	*PCMMR TEST	REDACTED

Legend: \*Enabled

AS Add Server	TS (Test Server)
ES Edit Server	WS Web Service Manager
DS Delete Server	CK Check Web Service Availability
EP Expand Entry	LK Lookup Key Manager

Select Action:Quit// **ES** Edit Server

Select Web Server: (1-2): **1**

NAME: PCMMR//

SERVER: REDACTED//

PORT: 80//

DEFAULT HTTP TIMEOUT: 30//

STATUS: ENABLED//

Security Credentials

=====

LOGIN REQUIRED: NO// **y** YES

USERNAME: **CPRSCLIENT**

Want to edit PASSWORD (Y/N): **y**

Enter a new PASSWORD: \*\*\*\*\*

Please re-type the new password to show that I have it right: \*\*\*\*\*

Ok, password has been changed!

SSL Setup

=====

SSL ENABLED: FALSE//

Authorize Web Services

=====

Select WEB SERVICE: PCMM-R GET PC INFO REST//

WEB SERVICE: PCMM-R GET PC INFO REST//

STATUS: ENABLED//

Select WEB SERVICE:

**Web Server Manager**      Mar 02, 2015@16:52:24      Page: 1 of 1

HWSC Web Server Manager  
Version: 1.0      Build: 31

ID	Web Server Name	IP Address or Domain Name:Port
1	*PCMMR	REDACTED
2	*PCMMR TEST	REDACTED

Legend: \*Enabled

AS Add Server	TS (Test Server)
ES Edit Server	WS Web Service Manager
DS Delete Server	CK Check Web Service Availability
EP Expand Entry	LK Lookup Key Manager

Select Action:Quit// Q

### 3.5.5.PCMM Web Application Installation

**NOTE:** Complete the steps below once the Data Migration is validated and completed and the PCMM Web application is ready to go live in site's environment.

**Ensure you received notification from the Implementation Manager before proceeding with this step.**

- You may install in the test environment per requirements at the site; however, test instances of CPRS may no longer display PCMM data correctly.
- Do not install into Production until the Implementation Manager has provided sign off.

### 3.5.6.Delete Post Installation Processing Routines

The following routines should be deleted after SD\*5.3\*603 has been successfully installed:

- SD53P603
- SCMCOPT
- SCMCFPOS

### 3.5.7.Install OR\*3.0\*387

Pre-Requisites:

- Once the Implementation Manager has approved the installation of Patch OR\*3.0\*387, ensure all other deployments have been executed.

### 3.5.8.Remove Legacy PCMM GUI from User Computers

The IRM office should coordinate the removal of the Legacy PCMM GUI from user workstations.

### 3.5.9.Recovery Steps

If there are problems encountered during the “go-live” process, some recovery steps have been automated.

#### Restore PCMM Files

---

**NOTE: Restore PCMM Files only if errors occur with the installation of PCMM in a live environment.**

---

Caché (M) command line:

```
VISTA>DO ^%GI
```

Global input

Device: <directory name>pcmmBKUPS.gbl

Parameters? "RS" =>

Globals were saved on 11 Aug 2014 3:26 PM Cache  
with description: PCMM Vista Files

Input option: A

^SCPT ^SCTM

VISTA>

### Re-Run Standard Position Cleanup

If needed, re-run the Standard Position Cleanup.

Restore the file from the backup global.

```
VISTA>DO ^%GIGEN
```

Device: <directory name>teampositionbkup.gbl

Parameters? "R" =>

Transfer entire set of files? No=> y

Transferring files on Aug 06 2014 at 12:48 PM

From global ^SCTM(404.57

To global ^SCTM(404.57

Transfer completed

Done for this set of files.

VISTA>

Delete the ^XTMP("SCMCFPOS") global.

```
VISTA>KILL ^XTMP("SCMCFPOS")
```

VISTA>

Rerun the cleanup routine.

```
VISTA>DO EN^SCMCFPOS
```

VISTA>

### Remove PCMM Legacy Menus Out of Order

```
VISTA>DO RESTORE^SCMCOPT
```

VISTA>

## Restore Legacy Broker Menu to Users

```
VISTA>DO RESTMENU^SCMCOPT  
VISTA>
```

## 4. Patch OR\*3.0\*387 – PCMM Web Team Display Enhancements to CPRS

Patch OR\*3.0\*387 allows CPRS to retrieve the patient’s team and provider assignments from PCMM Web.

---

**NOTE:** Wait to install this patch on the site’s Production System until PCMM Web is ready to “go live.” You will receive notification from the Implementation Manager when it is ok to proceed. PCMM Web features in CPRS (PCMM summary header and PCMM details popup window) will not function properly without a live PCMM Web system.

Patch OR\*3.0\*387 may be installed on test systems after SD\*5.3\*603 is installed.

---

### 4.1.Installation Overview

Patch OR\*3.0\*387 will install one routine and two RPC definitions. There are no unique instructions for either pre or post-installation. This patch may be installed with users on the system although it is recommended that the patch be installed during non-peak hours to minimize potential disruption to users. This patch should take less than 1 minute to install.

### 4.2.Pre-Installation Instructions

Ensure to install patch SD\*5.3\*603 first. Wait to install OR\*3.0\*387 until directed by the PCMM Web Implementation Team. CPRS PCMM functionality will not execute properly without a live PCMM Web system.

### 4.3.Installation Instructions

This patch will install one routine and two RPC definitions.

The VistA software for this patch is released as a KIDS host file. It may be downloaded from a secured FTP site as directed by the PCMM Web Implementation Team. The software distribution includes:

File Name	Contents	Retrieval Format
OR_30_387.KID	KIDS Build	ascii

1. Download the OR\_30\_387.KID file.
2. From the Kernel Installation and Distribution System Menu, select the Installation Menu, then the **Load a Distribution** option. When prompted for the Host File, enter <directory>**OR\_30\_387.KID**, then when prompted to “Continue with Load” (twice), respond **YES**.

3. From the Installation Menu, you may also select the following options. When prompted for the INSTALL NAME, enter the patch **OR\*3.0\*387**.
  - a. Verify Checksums in Transport Global - This option will allow you to ensure the integrity of the routines that are in the transport global.
  - b. Compare Transport Global to Current System - This option will allow you to view all changes that will be made when this patch is installed. It compares all components of this patch (routines, DDs, templates, etc.).
  - c. Backup a Transport Global - This option will create a backup message of any routines exported with this patch. It will not backup any other changes such as DDs or templates.
1. From the Installation Menu, select the Install Package(s) option and choose the patch to install. Enter **OR\*3.0\*387**.
2. When prompted 'Want KIDS to Rebuild Menu Trees Upon Completion of Install? NO//' respond **NO**.
3. When prompted 'Want KIDS to INHIBIT LOGONs during the install? NO//' respond **NO**.
4. When prompted 'Want to DISABLE Scheduled Options, Menu Options, and Protocols? NO//' respond **NO**.
5. If prompted 'Delay Install (Minutes): (0 - 60): 0//' respond **0**.

## 4.4.Post-Installation Instructions

No post-installation instructions needed.

## 5. Patches WEB 1\*1 and WEB 1\*2 Installation

The WEB 1\*1 and WEB 1\*2 patches are informational only patches and have no associated VistA software. The software associated with WEBP\*1\*1 and WEBP\*1\*2 are for the PCMM Web application. The PCMM Web application is installed on one or more servers in a VA data center.

## 6. PCMM Web VistA Patch Rollback

1. To rollback a VistA patch, choose and execute the “Backup a Transport Global” on the Patch Installation Menu. This option will create a MailMan Message containing a backup of all current routines that will be replaced by the patch install.

An example of the message subject:

BACKUP OF <PATCH NAME> INSTALL ON MMM DD, YYYY

### 6.1.Patch SD\*5.3\*603

For patch **SD\*5.3\*603**, PCMM Web will keep the data synchronized with VistA; there should not be a need to restore data on VistA.

2. The following routines would need to be restored from the Backup Transport Global MailMan message:

SCAPMC23  
SCMCDD1  
SCMCMHTC  
SCMCTSK  
SCMCTSK2  
SCMCTSK5  
SCMCTSK6  
SDCOU

**Note:** The other routines in the patch were written specifically for PCMM Web. They may be deleted.

3. Refer to Section 3.5.9 Recovery Steps for detailed steps on reverting some of the changes made by the patch, specifically, Remove PCMM Legacy Menus Out of Order and Restore Legacy Broker Menu to Users.
4. Changes to Fileman Data Dictionaries can be restored from a system backup, or a subsequent patch. The files that are changed are documented in the patch description.
5. Changes to the Standard Position (#403.46) file may remain.
6. Any other changes made by this patch can be remediated by a subsequent patch.

## **6.2. Patch SD\*5. 3\*620**

The routines and menu options released in this patch are for one-time data extracts used for data migration. No rollback is required. The released M routines and Menu Options may be deleted from the target system

## **6.3. Patch OR\*3.0\*387**

Restore the one routine (ORWPT1) from the Backup Transport Global Mailman message. Changes to revert the two RPC definitions (ORWPT1 PRCARE and ORWPT1 PCDETAIL) would have to be done manually or in a subsequent new patch.

## **6.4.WEBP\*1\*1**

Informational patch, no VistA rollback required.

## **6.5.WEBP\*1\*2**

Informational patch, no VistA rollback required.

## 6.6.Additional Information and Example

### Backing Up Transport Globals

The Backup a Transport Global option [XPD BACKUP] creates a MailMan message that will back up all current routines on a system that would be replaced by a KIDS patch. This option is under the KIDS: Installation menu of the KIDS menu. This applies to a patch that has been loaded on a system, but not installed.

### Example of Backup Transport Global and Restoring Routines to Pre-Patch Version

SELECT OPTION NAME: **XPD MAIN**      KERNEL INSTALLATION & DISTRIBUTION SYSTEM

EDITS AND DISTRIBUTION ...  
UTILITIES ...  
**INSTALLATION ...**  
PATCH MONITOR MAIN MENU ...

SELECT KERNEL INSTALLATION & DISTRIBUTION SYSTEM <TEST ACCOUNT> OPTION:  
INSTALLATION

1      LOAD A DISTRIBUTION  
2      VERIFY CHECKSUMS IN TRANSPORT GLOBAL  
3      PRINT TRANSPORT GLOBAL  
4      COMPARE TRANSPORT GLOBAL TO CURRENT SYSTEM  
5      **BACKUP A TRANSPORT GLOBAL**      **THIS STEP NEEDS TO BE DONE BEFORE**  
**INSTALLING THE PATCH, AS DOCUMENTED IN THE INSTALLATION GUIDE.**  
6      INSTALL PACKAGE(S)  
        RESTART INSTALL OF PACKAGE(S)  
        UNLOAD A DISTRIBUTION

YOU HAVE PENDING ALERTS  
        ENTER    "VA TO JUMP TO VIEW ALERTS OPTION

SELECT INSTALLATION <TEST ACCOUNT> OPTION: **BACKUP A TRANSPORT GLOBAL**

SELECT INSTALL NAME:      PRCA\*4.5\*301      LOADED FROM

DISTRIBUTION      10/7/15@19:

42:49

=> TREASURY CROSS-SERVICING PROGRAM    ;CREATED ON OCT 05, 2015@13:38:56

THIS DISTRIBUTION WAS LOADED ON OCT 07, 2015@19:42:49 WITH HEADER OF  
        TREASURY CROSS-SERVICING PROGRAM    ;CREATED ON OCT 05, 2015@13:38:56  
        IT CONSISTED OF THE FOLLOWING INSTALL(S):

        PRCA\*4.5\*301

SUBJECT: BACKUP OF PRCA\*4.5\*301 INSTALL ON OCT 07, 2015

REPLACE

**LOADING ROUTINES FOR PRCA\*4.5\*301.....**

**SEND MAIL TO: BRICKER,DENNIS//      BRICKER,DENNIS**

**SELECT BASKET TO SEND TO: IN//**

**AND SEND TO:**



```

1    LOAD A DISTRIBUTION
2    VERIFY CHECKSUMS IN TRANSPORT GLOBAL
3    PRINT TRANSPORT GLOBAL
4    COMPARE TRANSPORT GLOBAL TO CURRENT SYSTEM
5    BACKUP A TRANSPORT GLOBAL
6    INSTALL PACKAGE(S)
    RESTART INSTALL OF PACKAGE(S)
    UNLOAD A DISTRIBUTION

```

DEVISC1A1:DEVV00>D ^XM

VA MAILMAN 8.0 SERVICE FOR REDACTED  
 YOU LAST USED MAILMAN: 10/05/15@14:27  
 YOU HAVE NO NEW MESSAGES.

SELECT MAILMAN OPTION: READ/MANAGE MESSAGES

SELECT MESSAGE READER: CLASSIC//  
 READ MAIL IN BASKET: IN// (1 MESSAGE)  
 LAST MESSAGE NUMBER: 1 MESSAGES IN BASKET: 1  
 ENTER ??? FOR HELP.

IN BASKET MESSAGE: 1//

SUBJ: BACKUP OF PRCA\*4.5\*301 INSTALL ON OCT 07, 2015 [#135901]  
 10/07/15@19:43

6470 LINES

FROM: BRICKER,DENNIS IN 'IN' BASKET. PAGE 1

```

-----
--
$TXX PACKMAN BACKUP CREATED ON WEDNESDAY, 10/7/15 AT 19:43:23 BY REDACTED
$ROU PRCAAPR1 (PACKMAN_BACKUP)
PRCAAPR1 ;WASH-ISC@ALTOONA,PA/RGY - PATIENT ACCOUNT PROFILE ;2/12/97 11:48
AM
;;4.5;ACCOUNTS
RECEIVABLE; **34,45,108,143,141,206,192,218,276,275,284,301**;MA
R 20, 1995;BUILD 101
;;PER VA DIRECTIVE 6402, THIS ROUTINE SHOULD NOT BE MODIFIED.
HDR ;HEAD FOR ACCOUNT PROFILE
S X="",$P(X,"=",23)=" W @IOF,!,X," A C C O U N T P R O F I L E ",X
HDR1 N DMC,IBRX,RSN, TOP4, TOP6, DPTFLG, ACCTNUM, RCCV
S IBRX=0, DPTFLG=0
;
;DISPLAY NEW 'STATEMENT ACCOUNT NUMBER' (PATCH 206)
I PRCADB["DPT(" S DPTFLG=1, ACCTNUM=$$ACCT(PRCADB)
;
W !,$P(DEBT,"^",2) I DPTFLG!(PRCADB["VA(200,") S
X=$$P(PRCADB["DPT(":$P(^DPT(+P
RCADB,0),"^",9),1:$P($G(^VA(200,PRCADB,1)),"^",9)) W " (,$E(X,1,3),"-
", $E(X,4

```

,5), "- ",\$(X,6,9),")"

ENTER RETURN TO CONTINUE OR '^' TO EXIT: ^

ENTER MESSAGE ACTION (IN IN BASKET): IGNORE// ?

ENTER A CODE FROM THE LIST.

B	BACKUP	Q	QUERY
BR	PRINT TO THE BROWSER	Q XXX	QUERY RECIPIENT(S) XXX
C	COPY	QC	QUERY CURRENT
D	DELETE	QD	QUERY DETAILED
E	EDIT	QN	QUERY NETWORK
F	FORWARD	QNC	QUERY NOT CURRENT
H	HEADERLESS PRINT	QT	QUERY TERMINATED
HG	HELP:GROUP INFORMATION	R	REPLY
HU	HELP:USER INFORMATION	RI	REPLY AND INCLUDE RESPONSES
I	IGNORE	S	SAVE
IN	INFORMATION ONLY	T	TERMINATE
L	LATER	V	VAPORIZE DATE EDIT
N	NEW	W	WRITE
P	PRINT	X	XTRACT PACKMAN

ENTER MESSAGE ACTION (IN IN BASKET): IGNORE// XTRACT PACKMAN

SELECT PACKMAN FUNCTION: ?

ANSWER WITH PACKMAN FUNCTION NUMBER, OR NAME

CHOOSE FROM:

- 1 ROUTINE LOAD
- 2 GLOBAL LOAD
- 3 PACKAGE LOAD
- 4 SUMMARIZE MESSAGE
- 5 PRINT MESSAGE
- 6 INSTALL/CHECK MESSAGE
- 7 INSTALL SELECTED ROUTINE(S)
- 8 TEXT PRINT/DISPLAY
- 9 COMPARE MESSAGE

SELECT PACKMAN FUNCTION:

## 7. Appendix A – Patch Description WEB\*1\*1

4:32 PM 11/5/2015Vista Patch Display

Page: 1

```
=====
Run Date: NOV 05, 2015           Designation: WEBP*1*1
Package : PATIENT CENTERED MANAGEMENT MODULE Priority : MANDATORY
Version : 1                     Status      : COMPLETE/NOT RELEASED
=====
```

Subject: PATIENT-CENTERED MANAGEMENT MODULE (PCMM) WEB

Category: INFORMATIONAL

Description:

=====

This is the informational patch for the release of the new Patient-Centered Management Module (PCMM) Web application.

### RELEASE INFORMATION:

PCMM Web is a portlet that runs inside the Clinical Information Support System (CISS) portal. The Clinical Information Support System (CISS) is a web-based portal application that provides a central interface for users to access information and applications necessary for their role. The applications accessed through CISS are called partner systems. PCMM Web is a partner system to CISS.

In order to fully support a team based, patient-centric approach to healthcare delivery, enhancements to PCMM have been developed which allow a team to be formed and aligned around a patient. These, include providers residing in multiple VA sites and in non-VA settings to enable care coordination and communication. The software supports automated data collection for management metrics and analysis related to access, workload, and panel management. VHA's model of team-based care is known as the Patient-Aligned Care Team (PACT). The goal is to evolve and replace existing PCMM software with functionality that identifies all team members and specialists (VA and non-VA) involved in the care of the patient, as well as their contact information and provide modalities to facilitate provider-provider communication. This new PACT Management Module is known as PCMM Web. According to the PCMM Modification Workgroup, the relationship between the patient and his/her Primary Care Provider (PCP) will help to enhance patient care and the treatment process. Patients who regularly visit the same PCP receive better healthcare and utilize fewer healthcare resources because of the PCP's ability to treat patients more efficiently and effectively.

There are three Vista patches associated with release of PCMM Web. These patches are required and support PCMM Web interactions with Vista and CPRS.

SD\*5.3\*620 - PCMM DATA EXTRACTS  
SD\*5.3\*603 - PCMM WEB LEGACY CHANGES  
OR\*3.0\*387 - PCMM Web TEAM DISPLAY ENHANCEMENTS TO CPRS

### SOFTWARE CHANGES:

=====

PCMM Web is a web-based application. Changes will be applied to the production servers and will be immediately available to the users. No changes at the local site are required for this release.

## SYSTEM REQUIREMENTS:

=====

## SOFTWARE RETRIEVAL:

=====

The PCMM Web application can be accessed directly from Internet Explorer (IE). All installations will occur on the single national enterprise web server.

## Test Sites:

-----

Memphis VAMC - Memphis, TN  
Iron Mountain VAMC - Iron Mountain MI  
VA West Los Angeles HCS - Los Angeles, CA  
Portland VAMC - Portland, OR

## Documentation:

-----

Title	File Name	FTP Mode
-----	-----	-----
Installation Guide	SD_53_603_IG.PDF	binary
SD Release Notes	SD_53_603_RN.PDF	binary
User Guide	SD_53_603_UM.PDF	binary
OR Release Notes	OR_30_387_RN.PDF	binary

## Documentation Retrieval Instructions:

-----

The files listed above will be obtainable via FTP. The preferred method will be to FTP the files from:

## REDACTED

This transmits the files from the first available FTP server. Sites may elect to retrieve manuals directly from a specific server as follows:

CIO FIELD OFFICE	FTP ADDRESS	DIRECTORY
------------------	-------------	-----------

## REDACTED

Documentation can also be found on the VA Software Documentation Library at:  
<http://www4.va.gov/vdl/>

## Patch Installation:

There is no local Vista installation for PCMM Web. All installations will be done on the national web server.

Supporting Vista patches are required. See the PCMM Web-Vista Installation Guide.

## ADDITIONAL INFORMATION:

=====

If you have any questions concerning the implementation of this application, please contact the VA Service Desk at 1-888-596-4357 or directly log a Remedy ticket via Remedy Requester application using the

category: Applications-HealthVet-Vista, and type, PCMM Web.

Any changes or impacts to this package/installation will be reported on this message.

Routine Information:

=====

No routines included.

=====

User Information:

Entered By :	THOMPSON,ANDREW R	Date Entered :	AUG 13,2014
Completed By:	YARLAGADDA,MADHAVI	Date Completed:	NOV 5,2015
Released By :		Date Released :	

=====

## 8. Appendix B – Patch Description WEB\*1\*2

Vista Patch Display

Page: 1

=====

Run Date: SEP 24, 2015	Designation: WEBP*1*2 TEST v1
Package : PATIENT CENTERED MANAGEMENT MODULE	Priority : MANDATORY
Version : 1	Status : UNDER DEVELOPMENT

=====

Subject: PATIENT-CENTERED MANAGEMENT MODULE (PCMM) WEB APPLICATION, VERSION 1.1

Category: INFORMATIONAL

Description:

=====

The Patient-Centered Management Module (PCMM) Web application version WEBP-1.2 provides several upgrades and enhancements for the national release of PCMM Web.

Enhancements:

=====

NON-VA CARE

-----

Functionality to capture non-va care has been added in WEBP\*1\*2. Provide the ability to capture, view, and manage Non-VA Providers that are providing Non-VA Care (formerly Fee Basis) to the patient through the VA. Non-VA Care consists of three categories:

- Veteran's Choice
- Community Nursing Home
- Veteran State Home

New Menus in PCMMWeb will allow a user to search for Non-VA Providers and Non-VA practices. Users will be required to assign a Non-VA Practice to a Non-VA Provider and then to the patient.

The user is given an option to assign the patient to a special care type PACT team, "Non-VA Care", to allow a Care Coordinator to manage the population of patients receiving Non-VA Care paid for by the VA.

This new functionality also allows a special tag to appear in the CPRS header "\*Click for Non-VA PC\*" indicating that a patient is receiving primary care from a provider in one of the Non-VA Care categories with a Specialty of "Primary Care." In the CPRS window, a new tag will appear for these Non-VA Care primary care assignments by using the tag of "Non-VA PC:" at the bottom of the CPRS popup window. Only the "Primary Care" Specialty will be indicated in the CPRS header by using the "\*Click for Non-VA PC\*" tag.

All other Non-VA provider assignments to patients with other Specialties, except Primary Care, will only be displayed in the CPRS Window no changes to current functionality. the current functionality of capturing and displaying Private Sector and DOD Non-VA Providers is still available to the user thru the new Non-VA Providers process.

#### HOME BASED PRIMARY CARE

-----  
Provide the ability to remove Home Based Primary Care (HBPC) as a FOCUS of the care type "Primary Care" and created a new specialty care type of "Primary Care - HBPC". This care type functions as a special Primary Care PACT team that will not follow the same validation rules as a Primary Care PACT team and will have no pending status. Assignment to this care type will be "Active" automatically without using encounters. A patient will only be assigned to either a PC PACT team or a PC-HBPC PACT team at any given time within the same 3 digit station code. This new functionality allows this special PACT team to display in the CPRS header the same as for PC PACT teams by indicating the team name and the assigned PCP and AP, if assigned. In the CPRS window, a new tag will appear indicating this new care type of "Primary Care - HBPC" by using the tag of "HBPC:" instead of "PACT:".

#### Implementation:

=====

The PCMM Web WEBP-1.2 is a centrally managed web-based application and will be implemented as a one-time installation by the PCMM Technical Team (HP). PCMM Web 1.1 was installed at four facilities that transitioned to PCMM Web in its Initial Operating Capability (IOC) stage:

- 585 Iron Mountain
- 614 Memphis
- 648 Portland
- 691 West Los Angeles

#### Implementation Files:

=====

None

## Test Sites:

-----

Memphis VAMC - Memphis, TN  
Iron Mountain VAMC - Iron Mountain MI  
VA West Los Angeles HCS - Los Angeles, CA  
Portland VAMC - Portland, OR

## Documentation:

=====

The following documentation is available with the release of PCMM Web WEBP-1.2:

PCMM Web WEBP-1.2 User Guide  
PCMM Web WEBP-1.2 Release Notes

## Documentation Retrieval Instructions:

-----

The files listed above will be obtainable via FTP. The preferred method will be to FTP the files from:

### REDACTED

This transmits the files from the first available FTP server. Sites may elect to retrieve manuals directly from a specific server as follows:

CIO FIELD OFFICE	FTP ADDRESS	DIRECTORY
------------------	-------------	-----------

### REDACTED

Documentation can also be found on the VA Software Documentation Library at:  
<http://www.va.gov/vdl/>

## Patch Installation:

=====

There is no local Vista installation for PCMM Web. All installations will be done on the national web server.

## ADDITIONAL INFORMATION:

=====

If you have any questions concerning the implementation of this application, please contact the VA Service Desk at 1-888-596-4357 or directly log a Remedy ticket via Remedy Requester application using the category: Applications-HealtheVet-Vista, and type, PCMM Web.

Any changes or impacts to this package/installation will be reported on this message.

## Routine Information:

=====

No routines included.

=====

User Information:

Entered By : REDACTED Date Entered : MAR 5,2015  
Completed By: Date Completed:  
Released By : Date Released :

=====

## 9. Appendix C – Patch Description SD\*5.3\*620

Vista Patch Display

Page: 1

=====

Run Date: JUN 12, 2015	Designation: SD*5.3*620
Package : SCHEDULING	Priority : MANDATORY
Version : 5.3 SEQ #518	Status : RELEASED
Compliance Date: APR 09, 2015	

=====

Subject: PCMM WEB DATA EXTRACTS

Category: ROUTINE

Description:

=====

The purpose of this patch is to provide sites with a means to extract Vista legacy Primary Care Management Module (PCMM) data for comparison to Patient-Centered Management Module-Web (PCMM Web) for data migration prior to the implementation of PCMM Web patch SD\*5.3\*603.

\*\*\*\*\*ATTENTION\*\*\*\*\*

DO NOT run the "SCMC PCMM EXTRACT ROUTINES" listed below until your site has been scheduled to begin the PCMM data validation and migration process. Each site will be contacted by the Implementation Manager to schedule PCMM data validation and migration.

\*\*\*\*\*

### Technical Summary

=====

1. Routine SCRPTeam is a new routine that extracts data from the TEAM file (404.51) for comparison to PCMMR data.
2. Routine SCRPTHST is a new routine that extracts data from the TEAM HISTORY file (404.58) for comparison to PCMMR data.
3. Routine SCRPTPOS is a new routine that extracts data from the TEAM POSITION file (404.57) for comparison to PCMMR data.
4. Routine SCRPTPHS is a new routine that extracts data from the TEAM POSITION HISTORY file (404.59) for comparison to PCMMR data.
5. Routine SCRPTPA is a new routine that extracts data from the PATIENT TEAM ASSIGNMENT file (404.42) for comparison to PCMMR data.
6. Routine SCRPTTPA is a new routine that extracts data from the PATIENT TEAM POSITION ASSIGNMENT file (404.43) for comparison to PCMMR data.



7. Routine SCRPPRAH is a new routine that extracts data from the PRECEPTOR ASSIGNMENT HISTORY file (404.53) for comparison to PCMMR data.
8. Routine SCRPPAHS is a new routine that extracts data from the POSITION ASSIGNMENT HISTORY file (404.52) for comparison to PCMMR data.
9. A new security key PCMM DATA EXTRACTS is necessary to run the extract routine options.

Additional Information:

-----

DO NOT run the extract options in this patch until your site has been scheduled to begin the PCMM data validation and migration process. Each site will be contacted by the Implementation Manager to schedule PCMM data validation and migration

Patch Components

=====

Files & Fields Associated:

File Name (#)	Field Name (#)	New/Modified/Deleted
-----	-----	-----
N/A		

Forms Associated:

Form Name	File #	New/Modified/Deleted
-----	-----	-----
N/A		

Mail Groups Associated:

Mail Group Name	New/Modified/Deleted
-----	-----
N/A	

Options Associated:

Option Name	Type	New/Modified/Deleted
-----	----	-----
SCMC PCMM EXTRACT ROUTINES	menu	new
SCMC TEAM FILE EXTRACT	routine	new
SCMC TEAM HISTORY FILE EXTRACT	routine	new
SCMC TEAM POSITION EXTRACT	routine	new
SCMC TEAM POS HISTORY EXTRACT	routine	new
SCMC PAT TEAM ASSIGN EXTRACT	routine	new
SCMC PAT TEAM POS ASGN EXTRACT	routine	new
SCMC POSITION ASSIGN EXTRACT	routine	new
SCMC PRECEPTOR ASSIGN EXTRACT	routine	new

Protocols Associated:

Protocol Name	New/Modified/Deleted
-----	-----
N/A	

Security Keys Associated:

Security Key Name	New/Modified/Deleted
-----	-----
PCMM DATA EXTRACTS	new

Remote Procedures Associated:

RPC Name	New/Modified/Deleted
-----	-----
N/A	

Templates Associated:

Template Name	Type	File Name (#)	New/Modified/Deleted
-----	----	-----	-----
N/A			

New Service Requests (NSRs):

-----

N/A

Patient Safety Issues (PSIs):

-----

N/A

Remedy Ticket(s) & Overviews:

-----

N/A

Test Sites:

-----

Memphis VAMC - Memphis, TN  
 Iron Mountain VAMC - Iron Mountain, MI  
 VA West Los Angeles HCS - Los Angeles, CA  
 Portland VAMC - Portland, OR

Documentation Retrieval Instructions:

=====

Updated documentation describing the new functionality introduced by this patch is available.

The preferred method is to FTP the files from  
**REDACTED**  
 This transmits the files from the first available FTP server. Sites may also elect to retrieve software directly from a specific server as follows:

**REDACTED**

The documentation will be in the form of Adobe Acrobat files.

Documentation can also be found on the VA Software Documentation Library at: <http://www.va.gov/vdl/>

File Description	File Name	FTP Mode
-----	-----	-----
PCMM Web-Vista Data Extract Guide	SD_53_620_DM.pdf	binary
Release Notes	SD_53_620_RN.pdf	binary

## Patch Installation:

=====

Please refer to the PCMM Web-Vista Data Extract Guide for complete details.

## Installation Overview

-----

1. DO NOT run the Post Installation instructions in this patch on the Production System until your site has been scheduled to begin the PCMM Data Mitigation process.  
Each site will be contacted by the PCMM Implementations Manager to schedule PCMM Data Mitigation.
2. This patch may be installed with users on the system. This patch should take less than 2 minutes to install.
3. The file extract processing may be system resource intensive.  
It is recommended that the Post Installation portion of this patch be scheduled for non-peak hours.

## Pre-Installation Instructions

-----

No special instructions.

## Installation Instructions

-----

This patch will install eight data extract routines, nine menu options, and one security key.

1. Login to the "backend" database server (i.e. ecp node), if applicable to your site.
2. Choose the PackMan message containing this patch.
3. Choose the INSTALL/CHECK MESSAGE PackMan option.
4. From the Kernel Installation and Distribution System Menu, select the Installation Menu. From this menu, you may elect to use the following options. When prompted for the INSTALL NAME enter SD\*5.3\*620
  - a. Verify Checksums in Transport Global - This option will allow you to ensure the integrity of the routines that are in the transport global.
  - b. Compare Transport Global to Current System - This option will allow you to view all changes that will be made when this patch is installed. It compares all components of this patch (routines, DDs, templates, etc.).
  - c. Backup a Transport Global - This option will create a backup message of any routines exported with this patch. It will not backup any other changes such as DDs or templates.
5. From the Installation Menu, select the Install Package(s) option and choose the patch to install. Enter SD\*5.3\*620
6. When prompted 'Want KIDS to Rebuild Menu Trees Upon Completion of Install? NO//' respond NO
7. When prompted 'Want KIDS to INHIBIT LOGONS during the install? NO//' respond NO

8. When prompted 'Want to DISABLE Scheduled Options, Menu Options, and Protocols? NO//' respond NO
9. If prompted 'Delay Install (Minutes): (0 - 60): 0//' respond 0.

Post-Installation Instructions (to be executed once site is scheduled for PCMM Web Data Mitigation)

-----

Please refer to the PCMM Web-Vista Data Extract Guide for complete details.

NOTE: DO NOT run the extract options on the Production system until your site has been scheduled to begin the PCMM Data Mitigation process. Extract options may be run in test accounts to verify functionality, however, the FTP step should not be run in the test account.

Each site will be contacted by the Implementation Manager to schedule PCMM Data Mitigation.

Routine Information:  
=====

The second line of each of these routines now looks like:  
;5.3;Scheduling; \*\*[Patch List]\*\*;AUG 13, 1993;Build 11

The checksums below are new checksums, and can be checked with CHECK1^XTSUMBLD.

Routine Name: SCRPPAHS		
Before:	n/a	After: B22427775 **620**
Routine Name: SCRPPRAH		
Before:	n/a	After: B13384637 **620**
Routine Name: SCRPPPTA		
Before:	n/a	After: B18005623 **620**
Routine Name: SCRPPTPA		
Before:	n/a	After: B20107233 **620**
Routine Name: SCRPTTEAM		
Before:	n/a	After: B15183519 **620**
Routine Name: SCRPTHST		
Before:	n/a	After: B8383528 **620**
Routine Name: SCRPTPHS		
Before:	n/a	After: B9381464 **620**
Routine Name: SCRPTPOS		
Before:	n/a	After: B35911981 **620**

**REDACTED**

## 10. Appendix D – Patch Description SD\*5.3\*603

Vista Patch Display

Page: 1

=====

Run Date: NOV 05, 2015

Designation: SD\*5.3\*603

```
Package : SCHEDULING          Priority : MANDATORY
Version : 5.3                 Status   : COMPLETE/NOT RELEASED
```

```
Associated patches: (v)SD*5.3*107 <= must be installed BEFORE `SD*5.3*603'
                   (v)SD*5.3*526 <= must be installed BEFORE `SD*5.3*603'
                   (v)SD*5.3*539 <= must be installed BEFORE `SD*5.3*603'
                   (v)SD*5.3*575 <= must be installed BEFORE `SD*5.3*603'
                   (v)SD*5.3*581 <= must be installed BEFORE `SD*5.3*603'
```

Subject: PCMM WEB LEGACY CHANGES

Category: DATA DICTIONARY  
ROUTINE  
ENHANCEMENT  
OTHER  
SORT TEMPLATE

Description:  
=====

This patch implements changes to VistaA required to support the new Patient-Centered Management Module (PCMM) Web. There is a companion CPRS patch (OR\*3.0\*387) that implements changes to Remote Procedure Calls (RPC) required to display content for the Primary Care Header and Detail Window.

This patch is a part of a phased, coordinated process for deploying PCMM Web. The Vista software for this patch and the companion OR\*3.0\*387 patch is released as two KIDS host files. They may be downloaded from a secured ftp site as directed by the PCMM Web Implementation Team.

```
*****
DO NOT INSTALL THIS PATCH ON A PRODUCTION SYSTEM UNTIL NOTIFIED BY
THE PCMM WEB IMPLEMENTATION MANAGER.
*****
```

In order to fully support a team-based, patient-centric approach to healthcare delivery, enhancements to PCMM have been developed to allow a team to be formed and aligned around a patient, including providers across multiple VA sites and in non-VA settings to enable care coordination and communication. The software supports automated data collection for management metrics and analysis related to access, workload, and panel management. VHA's model of team-based care is known as the Patient-Aligned Care Team (PACT). The goal is to evolve and replace existing PCMM software with functionality that identifies all team members and specialists (VA and non-VA) involved in the care of the patient, as well as their contact information and provide modalities to facilitate provider-provider communication. This new PACT Management Module is known as PCMM Web. According to the PCMM Modification Workgroup, the relationship between the patient and his/her Primary Care Provider (PCP) will help to enhance patient care and the treatment process. Patients who regularly visit the same PCP receive better healthcare and utilize fewer healthcare resources because of the PCP's ability to treat patients more efficiently and effectively.

Most of the changes to VistA are to background processing that will not be visible to users. An Application Proxy user was created to support batch processing for reading and updating VistA files.

#### TECHNICAL SUMMARY:

=====

#### Files

-----

STANDARD POSITION (#403.46) file - Several position names were changed and new positions were added.

##### Name change

- TEAM PHARMACIST to PACT CLINICAL PHARMACIST
- DIETITIAN to REGISTERED DIETITIAN
- OIF OEF CLINICAL CASE MANAGER to TCM CLINICAL CASE MANAGER
- OIF OEF PROGRAM MANAGER to TCM PROGRAM MANAGER
- OIF OEF TRANSITION PATIENT ADVOCATE to TCM TRANSITION PATIENT ADVOCATE

##### New positions

- ADMINISTRATIVE ASSOCIATE
- ANTICOAG CLINICAL PHARMACIST
- ADVANCE PRACTICE ASSOCIATE PROVIDER
- ASSOCIATE PROVIDER
- CLINICAL ASSOCIATE
- FELLOW
- NURSE (LVN)
- NURSE PRACTITIONER ASSOCIATE PROVIDER
- PEER SUPPORT APPRENTICE
- PEER SUPPORT SPECIALIST
- PHYSICIAN ASSISTANT ASSOCIATE PROVIDER
- PRIMARY CARE PROVIDER
- SURROGATE CARE MANAGER
- SURROGATE PRIMARY CARE PROVIDER
- SURROGATE CLINICAL ASSOCIATE
- ADVANCE PRACTICE NURSE
- ADVANCE PRACTICE NURSE (MHTC)
- LEAD COORDINATOR
- PEER SUPPORT SPECIALIST (MHTC)

#### POSITION ASSIGNMENT HISTORY (#404.52) file

A new field was added:

- TEAMLET POSITION (#.12) field - indicates whether or not a position is a teamlet member.

The descriptions for the following field descriptions were modified to reflect that PCMM Web will maintain FTEE history data.

- FTEE HISTORY multiple (#1)
  - FTEE HISTORY (#.01) field
  - VALUE (#.02) field
  - USER (#.03) field

The trigger (FTEXR) on the FTEE EQUIVALENT (#.09) field will be deleted by the post-install routine. (This trigger performed updates to FTEE HISTORY, now maintained by PCMM Web.)

PATIENT TEAM ASSIGNMENT (#404.42) file - New code values were added to two fields.

ASSIGNMENT TYPE (#.08) field  
'98' for PENDING PRIMARY CARE  
STATUS (#.15) field  
'DU' for DOD UNASSIGN  
'IU' for INACTIVE UNASSIGN  
'DD' for REASSIGN-DOD REMOVED  
'PR' for PAT RELOCATION  
'RP' for REQ BY PAT  
'NN' for NOT NEEDED  
'PC' for PROV CHANGE  
'PI' for MVI MOVE/MERGE  
'FT' for INTRA FAC TRANS  
'MU' for MISSING/UNK  
'MD' for M-PACT DENIAL/WDRAW  
'DC' for DISCHARGE FROM CARE  
'ER' for ERROR

PATIENT TEAM POSITION ASSIGNMENT (#404.43) file - New code values were added to one field.

STATUS (#.12) field  
'DU' for DOD UNASSIGN  
'IU' for INACTIVE UNASSIGN  
'DD' for REASSIGN-DOD REMOVED  
'PR' for PAT RELOCATION  
'RP' for REQ BY PAT  
'NN' for NOT NEEDED  
'PC' for PROV CHANGE  
'PI' for MVI MOVE/MERGE  
'FT' for INTRA FAC TRANS  
'MU' for MISSING/UNK  
'MD' for M-PACT DENIAL/WDRAW  
'DC' for DISCHARGE FROM CARE  
'ER' for ERROR

A new cross reference ("C") was added to TEAM POSITION (#.02) field

OUTPATIENT PROFILE (#404.41) file - Two new fields were added:

CPRS HEADER TEXT (#.06) field - This field is populated by PCMM Web with primary care information to be displayed in the CPRS PCMM Header.  
CPRS PC WINDOW CACHE (#.07) field - This field stores the last data set displayed in the CPRS Primary Care Details Window. This cached data will be displayed if there is no connection to PCMM Web.

OUTPATIENT ENCOUNTER (#409.68) file - A new Index, ACOD, was created to sort records by the PATIENT (#.02) field and CHECK OUT PROCESS COMPLETION (#.07) field.

PCMM PATIENT EVENTS (#404.54) file - This is a new file used to track patient events of interest to PCMM Web.

PATIENT (#.01) field  
EVENT DATE/TIME (#.02) field  
EVENT CODE (#.03) field  
EVENT DATA (#.04) field

TEAM PURPOSE (#403.47) File - Two records were added:  
PRIMARY CARE - NVCC

## PRIMARY CARE - HBPC

### Routines

-----

The routine SCMCTSK was modified to update several files when a patient date of death is entered or removed in the PATIENT (#2) file.

- User enters or removes a date of death for a patient in Vista
- A cross reference on the PATIENT (#2) file DATE OF DEATH (#.351) field executes  
FC^DGFCPROT
- This routine submits the DG FIELD MONITOR protocol to TaskMan
- The DG FIELD MONITOR protocol executes the protocols in its Items list
- The SCMC PCMM INACTIVATE ON DATE OF DEATH protocol executes  
DEATH^SCMCTSK
- This entry point updates the following File  
PCMM PATIENT EVENTS (#404.54) file - record is created or updated

The routine SCMCTSK2 was modified to ensure the PCMM NIGHTLY TASK [SCMC PCMM NIGHTLY TASK] menu option job never runs on Vista. (A QUIT statement was added immediately after the entry point - NIGHT.)

Three new routines; SCMCWS1, SCMCWS1A, SCMCWSUT; were developed to implement a new Application Program Interface (API) that calls a PCMM Web web service to retrieve PACT and other team information that is displayed in the CPRS PC Details Window.

This API uses the HealtheVet Web Service Client (HWSC) to implement the web service. The default set up is performed by the post-install routine. This API is called by the CPRS RPC: ORWPT1 PCDETAIL. A new ICR, 6027 - SCMC PCMM/R GET PRIMARY CARE DETAILS, was created and activated to support this functionality.

These routines are also used by the new RPC, SCMC PCDETAIL. It is used to batch load CPRS PC Window Cache during PCMMR deployment.

\*\*\*\*\*

NOTE: Sites will encounter an XINDEX Error after the installation of this patch. SCMCWS1 uses HWSC. It calls a Cache Class to parse the eXtensible Markup Language (XML) document returned by the web service call.

A SAC Exemption (134) was approved on 02/04/2015.

\*\*\*\*\*

A new routine, SCMCDDR, was developed to implement the RPC, SCMC LISTER. It returns Vista data to PCMM Web using the VA FileMan DBS API: Lister (LIST^DIC).

A new routine, SCMCDDR0, was developed to implement the RPC, SCMC FINDER. It returns Vista data to PCMM Web using the VA FileMan DBS API: Find (FIND^DIC).

A new routine, SCMCDDR2, was developed to implement the RPC, SCMC GETS ENTRY DATA. It returns Vista data to PCMM Web using the VA FileMan DBS API: Data Retriever (GETS^DIQ).

A new routine, SCMCDDR3, was developed to implement the RPC, SCMC FILER. It updates Vista data from PCMM Web using a VA FileMan DBS APIs: Filer



(FILE^DIE) and Updater (UPDATE^DIE).

A new routine, SCMCENCT, was developed to implement the RPC, SCMC GET PATIENT ENCOUNTERS. It returns patient encounter data to PCMM Web. The data is used to determine if and when a patient had a completed encounter with a teamlet member.

A new routine, SCMCNPER, was developed to implement the RPC, SCMC GET NEW PERSON. It returns provider information to PCMM Web.

A new routine, SCMCPAT, was developed to implement two RPCs.

SCMC PATIENT DIEDON returns a patient's date of death to PCMM Web.

SCMC PATIENT INFO returns patient demographic information to PCMM Web.

A new routine, SCMCFTEE, was developed to implement five RPCs; SCMC FTEE CREATE, SCMC FTEE READ, SCMC FTEE READALL, SCMC FTEE UPDATE, SCMC FTEE DELETE. They allow PCMM Web to maintain FTEE HISTORY multiple (#1) in the POSITION ASSIGNMENT HISTORY (#404.52) file.

The routine SCMCMHTC was modified to fix a date comparison issue.

The routine SCAPMC23 was modified to correct an endless loop when reading unexpected data.

The routine SCMCDD1 was modified to create or update OUTPATIENT PROFILE (#404.41) file records for all assignment types. The routine was also modified to add "fail-safes" to quit processing if PATIENT TEAM ASSIGNMENT (#404.42) file or PATIENT TEAM POSITION ASSIGNMENT (#404.43) file records are not found when sending mail messages.

Two routines, SCMCTSK5 and SCMCTSK6, were modified to change auto-inactivation related time periods and other text in report and mail boiler plate text. All auto-inactivation processing will be performed by PCMM Web.

The routine SDCOU was modified to create ACOD index records for Credit Stop Code OUTPATIENT ENCOUNTER (#409.68) file records. The original code did not properly handle new style indexes. The Set and Kill logic was modified to do so.

The pre-install routine, SD53I603, was developed to perform the following actions:

- Delete the global for the STANDARD POSITION (#403.46) file and create the initial file header.

The post-install routine, SD53P603, was developed to perform the following actions:

- Add or update HWSC server and web service file entries
- Add the application proxy user
- Convert values in the PATIENT TEAM POSITION ASSIGNMENT (#404.43) file STATUS (#.12) field from NA to IU
- Build the new ACOD index for the OUTPATIENT ENCOUNTER (#409.68) file
- Build the new C cross reference for PATIENT TEAM POSITION ASSIGNMENT (#404.43) file
- Un-schedule the legacy PCMM NIGHTLY TASK [SCMC PCMM NIGHTLY TASK]

- menu option from TaskMan
- Place PCMM legacy menu options out-of-order
- Change users' secondary menu option from SCMC PCMM GUI WORKSTATION to SCMC PCMMR WEB USER MENU
- Create missing ACOD index records in the OUTPATIENT ENCOUNTER (#409.68) file
- Delete the trigger cross reference (FTEXR) on the POSITION ASSIGNMENT HISTORY (404.52) file FTEE EQUIVALENT (#.09) field
- Create two records in the TEAM PURPOSE (#403.47) file
  - PRIMARY CARE - NVCC
  - PRIMARY CARE - HBPC

A new routine, SCMCOPT, was developed to place a number of PCMM legacy menu options and a protocol out-of-order. The items to be placed out-of-order are listed below in the Options Associated and Protocols Associated sections. This routine also contains an entry point to change the value in the SECONDARY MENU OPTIONS (#.01) field in the SECONDARY MENU OPTIONS (#203) multiple in the NEW PERSON (#200) file for users that have the option SCMC PCMM GUI WORKSTATION to SCMC PCMMR WEB USER MENU. Both entry points are called by the post-installation routine, SD53P603.

A new routine, SCMCFPOS, was developed to fix the TEAM POSITION (#404.57) file at sites that have deviated from the gold STANDARD POSITION (#403.46) file that is released with this patch.

#### Patch Components

=====

#### Files & Fields Associated:

File Name (#)	Field Name (#)	New/Modified/Deleted
-----	-----	-----
PATIENT TEAM ASSIGNMENT file (#404.42)		
STATUS field	(#.15)	Modified - new codes
ASSIGNMENT TYPE field	(#.08)	Modified - new code
PATIENT TEAM POSITION ASSIGNMENT file (#404.43)		
TEAM POSITION	(#.02)	New C cross reference
STATUS	(#.12)	Modified - new codes
POSITION ASSIGNMENT HISTORY file (#404.52)		
TEAMLET POSITION field	(#.12)	New
FTEE HISTORY multiple	(#1)	Modified
FTEE HISTORY field	(#.01)	Modified
VALUE field	(#.02)	Modified
USER field	(#.03)	Modified
OUTPATIENT PROFILE file (#404.41)		
CPRS HEADER TEXT field	(#.06)	New
CPRS PC WINDOW CACHE field	(#.07)	New
OUTPATIENT ENCOUNTERS file (#409.68)		
PATIENT field	(#.02)	Added ACOD index for .02 and .07

PCMM PATIENT EVENTS	(#404.54)	New
PATIENT field	(#.01)	New
EVENT DATE/TIME field	(#.02)	New
EVENT CODE field	(#.03)	New
EVENT DATA field	(#.04)	New

STANDARD POSITION file (#403.46) no DD change, updated and added positions

#### Forms Associated:

Form Name	File #	New/Modified/Deleted
-----	-----	-----
N/A		

#### Mail Groups Associated:

Mail Group Name	New/Modified/Deleted
-----	-----
N/A	

#### Options Associated:

Option Name	Type	New/Modified/Deleted
-----	----	-----
SCMC PCMMR APP PROXY MENU	broker	new
SCMC PCMMR WEB USER MENU	broker	new
SC PCMM MARK OPT OUT OF ORDER	routine	new
SCMC PCMM NIGHTLY TASK	routine	out-of-order
SCMC PATIENT ASSIGN/UNASSIGN	routine	out-of-order
SCMC CLEAN GHOST ENTRIES	routine	out-of-order
SCMC CLEAN INSTITUTION	routine	out-of-order
SCMC CONVERSION TOOLS MENU	menu	out-of-order
SCMC EXTEND A PATIENT	routine	out-of-order
SCMC FLAGGED	routine	out-of-order
SCMC MU MASS TEAM UNASSIGNMENT	routine	out-of-order
SCMC PC ATTENDING CONVERSION	routine	out-of-order
SCMC PCMM BASELINE SEEDING	routine	out-of-order
SCMC PCMM EDIT PRACTIT #404.52	routine	out-of-order
SCMC PRECEPTOR CONVERSION	routine	out-of-order
SCMC PRECEPTOR MIGRATION RPT	routine	out-of-order
SCMC RETRANSMIT	routine	out-of-order
SCMC PCMM GUI WORKSTATION	broker	out-of-order
SCMC PC ATTENDING ASGN RPT	routine	out-of-order

#### Protocols Associated:

Protocol Name	New/Modified/Deleted
-----	-----
SC PC PATIENT ASSIGN/UNASSIGN	disabled

#### Security Keys Associated:

Security Key Name
-----
N/A

#### Remote Procedures Associated:

RPC Name	New/Modified/Deleted
-----	-----
SCMC LISTER	New
SCMC FINDER	New
SCMC GETS ENTRY DATA	New
SCMC FILER	New
SC DELETE ENTRY	Modified-set APP PROXY ALLOWED to Y
SCMC GET PATIENT ENCOUNTERS	New
SCMC GET NEW PERSON	New
SC PAT ASGN MAILMAN	Modified-set APP PROXY ALLOWED to Y
SC PATIENT LOOKUP	Modified-set APP PROXY ALLOWED to Y
SCMC PATIENT DIEDON	New
SCMC PATIENT INFO	New
SCMC FTEE CREATE	New
SCMC FTEE READ	New
SCMC FTEE READALL	New
SCMC FTEE UPDATE	New
SCMC FTEE DELETE	New
SCMC PCDETAIL	New

#### Templates Associated:

Template Name	Type	File Name (#)	New/Modified/Deleted
-----	----	-----	-----
SCMC INACTIVATED	SORT	#404.43	modified

#### Additional Information:

-----  
N/A

#### New Service Requests (NSRs):

-----  
20070415 - Rehost/Reengineer PCMM

#### Patient Safety Issues (PSIs):

-----  
N/A

#### Remedy Ticket(s) & Overviews:

-----  
N/A

#### Test Sites:

-----  
Memphis VAMC - Memphis, TN  
Iron Mountain VAMC - Iron Mountain MI  
VA West Los Angeles HCS - Los Angeles, CA  
Portland VAMC - Portland, OR

#### Documentation Retrieval Instructions:

=====

Updated documentation describing the new functionality introduced by this patch is available.

The preferred method is to FTP the files from

**REDACTED**

This transmits the files from the first available FTP server. Sites may also elect to retrieve software directly from a specific server as follows:

**REDACTED**

The documentation will be in the form of Adobe Acrobat files.

Documentation can also be found on the VA Software Documentation Library at: <http://www.va.gov/vdl/>

File Description	File Name	FTP Mode
-----	-----	-----
Installation Guide	SD_53_603_IG.PDF	binary
Release Notes	SD_53_603_RN.PDF	binary
User Guide	SD_53_603_UM.PDF	binary
Technical Manual	SD_53_603_TM.PDF	binary

#### Software Retrieval Instructions:

=====

The Vista software for this patch is released as a KIDS host file. It may be downloaded from a secured ftp site as directed by the PCMM Web Implementation Team.

The software distribution includes:

File Name	Contents	Retrieval Format
-----	-----	-----
SD_53_603.KID	KIDS Build	ascii

#### Patch Installation:

=====

This patch is a part of a phased, coordinated process for deploying PCMM Web.

\*\*\*\*\*  
DO NOT INSTALL THIS PATCH ON A PRODUCTION SYSTEM UNTIL NOTIFIED BY  
THE PCMM WEB IMPLEMENTATION MANAGER.  
\*\*\*\*\*

Please refer to the PCMM Web-Vista Installation Guide for complete details.

#### Routine Information:

=====

The second line of each of these routines now looks like:  
;;5.3;Scheduling;\*[Patch List]\*\*;AUG 13, 1993;Build 79

The checksums below are new checksums, and  
can be checked with CHECK1^XTSUMBLD.

Routine Name: SCAPMC23		
Before: B18108399	After: B18453123	**41,148,603**
Routine Name: SCMCDD1		
Before: B22709019	After: B25172674	**41,89,107,603**
Routine Name: SCMCDDR		
Before: n/a	After: B34341424	**603**
Routine Name: SCMCDDR0		
Before: n/a	After: B16319343	**603**
Routine Name: SCMCDDR2		
Before: n/a	After: B24257447	**603**
Routine Name: SCMCDDR3		
Before: n/a	After: B6820328	**603**
Routine Name: SCMCENCT		
Before: n/a	After: B28013021	**603**
Routine Name: SCMCFPOS		
Before: n/a	After: B95974585	**603**
Routine Name: SCMCFTEE		
Before: n/a	After: B17041744	**603**
Routine Name: SCMCMHCT		
Before: B9636096	After: B10680608	**575,603**
Routine Name: SCMCNPER		
Before: n/a	After: B40344757	**603**
Routine Name: SCMCOPT		
Before: n/a	After: B44626560	**603**
Routine Name: SCMCPAT		
Before: n/a	After: B7157117	**603**
Routine Name: SCMCTSK		
Before: B36651125	After: B38253964	**264,278,272,297,581,603**
Routine Name: SCMCTSK2		
Before: B103317459	After: B105827282	**297,498,527,499,532,504,603**
Routine Name: SCMCTSK5		
Before: B58969240	After: B59325306	**297,532,539,603**
Routine Name: SCMCTSK6		
Before: B61520556	After: B61603528	**297,532,581,603**
Routine Name: SCMCWS1		
Before: n/a	After: B162034987	**603**
Routine Name: SCMCWS1A		
Before: n/a	After: B97769299	**603**
Routine Name: SCMCWSUT		
Before: n/a	After: B5582990	**603**
Routine Name: SD53I603		
Before: n/a	After: B142505	**603**
Routine Name: SD53P603		
Before: n/a	After: B249302623	**603**
Routine Name: SDCOU		
Before: B4920937	After: B4357231	**603**

Routine list of preceding patches: 107, 148, 504, 539, 575, 581

REDACTED

## 11. Appendix E – Patch Description OR\*3.0\*387

Vista Patch Display

Page: 1

```
=====
Run Date: NOV 05, 2015           Designation: OR*3*387
Package : ORDER ENTRY/RESULTS REPORTING  Priority   : MANDATORY
Version : 3                     Status      : COMPLETE/NOT RELEASED
=====
```

Associated patches: (v)OR\*3\*306 <= must be installed BEFORE `OR\*3\*387'  
(c)SD\*5.3\*603 <= must be installed BEFORE `OR\*3\*387'

Subject: PCMM WEB TEAM DISPLAY ENHANCEMENTS TO CPRS

Category: ROUTINE  
          ENHANCEMENT

Description:

=====

This patch addresses changes to the code behind two CPRS RPCs required to support the release and use of Patient-Centered Management Module (PCMM) Web. It is released in conjunction with SD\*5.3\*603.

This patch is a part of a phased, coordinated process for deploying PCMM Web. The Vista software for this patch and the companion SD\*5.3\*603 patch is released as two KIDS host files. They may be downloaded from a secured ftp site as directed by the PCMM Web Implementation Team.

\*\*\*\*\*  
DO NOT INSTALL THIS PATCH ON A PRODUCTION SYSTEM UNTIL NOTIFIED BY  
THE PCMM WEB IMPLEMENTATION MANAGER.  
CPRS WILL NOT FUNCTION PROPERLY IF THIS PATCH IS INSTALLED PREMATURELY.  
\*\*\*\*\*

If the ORWPT1 PRCARE RPC is called by CPRS, the content of the first line of the PCMM Header Button is determined and formatted by PCMM Web, and stored in the Outpatient Profile File (404.41). The RPC code has been modified to retrieve the data from there. If the RPC is not called by CPRS, the data format remains as it was. The Mental Health line in the header was modified to include the MH Team name.

Associated routine: ORWPT1

Associated ICRs

6042 - SCMC PCMM/R GET PRIMARY CARE SUMMARY  
5972 - ORWPT1 PRCARE

If the ORWPT1 PCDETAIL RPC is called by CPRS, the contents of the Primary Care Detail Window is retrieved from PCMM Web by a web service, formatted, returned to CPRS, and displayed in the window. If the RPC is not called by CPRS, the data format remains as it was.

Associated routine: ORWPT1

Associated ICRs

6027 - SCMC PCMM/R GET PRIMARY CARE DETAILS

5971 - ORWPT1 PCDETAIL

Patch Components:

-----

Files & Fields Associated:

File Name (Number)	Field Name (Number)	New/Modified/Deleted
-----	-----	-----
N/A		

Forms Associated:

Form Name	File #	New/Modified/Deleted
-----	-----	-----
N/A		

Mail Groups Associated:

Mail Group Name	New/Modified/Deleted
-----	-----
N/A	

Options Associated:

Option Name	Type	New/Modified/Deleted
-----	-----	-----
N/A		

Protocols Associated:

Protocol Name	New/Modified/Deleted
-----	-----
N/A	

Security Keys Associated:

Security Key Name
-----
N/A

Templates Associated:

Template Name	Type	File Name (Number)	New/Modified/Deleted
-----	-----	-----	-----
N/A			



#### Remote Procedure Calls Associated:

RPC Name	New/Modified/Deleted
ORWPT1 PRCARE	Internal documentation updated.
ORWPT1 PCDETAIL	Internal documentation updated.

#### Additional Information:

##### New Service Requests (NSRs):

N/A

##### Patient Safety Issues (PSIs):

N/A

##### Remedy Ticket(s) & Overview:

None.

#### Test Sites:

Memphis VAMC - Memphis, TN  
Iron Mountain VAMC - Iron Mountain MI  
VA West Los Angeles HCS - Los Angeles, CA  
Portland VAMC - Portland, OR

#### Documentation Retrieval Instructions:

Updated documentation describing the new functionality introduced by this patch is available.

The preferred method is to FTP the files from

**REDACTED**

This transmits the files from the first available FTP server. Sites may also elect to retrieve software directly from a specific server as follows:

**REDACTED**

Documentation can also be found on the VA Software Documentation Library at: <http://www.va.gov/vdl/>

File Description	File Name	FTP Mode
Installation Guide	SD_53_603_IG.PDF	binary
Release Notes	OR_30_387_RN.PDF	binary

(This patch is released with SD\*5.3\*603. Installation notes for both patches are in the same document.)

NOTE: Updates to the Primary Care Header and Window Changes will be documented in the CPRS User guide with the release of CPRS 30.b

(OR\*3.0\*350).

References in the CPRS Help files to PCMM will also be updated in that version.

#### Software Retrieval Instructions:

=====

The VistA software for this patch is released as a KIDS host file. It may be downloaded from a secured ftp site as directed by the PCMM Web Implementation Team.

The software distribution includes:

File Name	Contents	Retrieval Format
-----	-----	-----
OR_30_387.KID	KIDS Build	ascii

#### Patch Installation:

=====

This patch is a part of a phased, coordinated process for deploying PCMM Web.

\*\*\*\*\*  
DO NOT INSTALL THIS PATCH ON A PRODUCTION SYSTEM UNTIL NOTIFIED BY  
THE PCMM WEB IMPLEMENTATION MANAGER.  
\*\*\*\*\*

Please refer to the PCMM Web-VistA Installation Guide for complete details.

#### Routine Information:

=====

The second line of each of these routines now looks like:

;3.0;ORDER ENTRY/RESULTS REPORTING;\*[Patch List]\*\*;Dec 17, 1997;Build 21

The checksums below are new checksums, and  
can be checked with CHECK1^XTSUMBLD.

Routine Name: ORWPT1

Before: B25961923 After: B33003577 \*\*10,109,280,340,306,387\*\*

Routine list of preceding patches: 306

=====

**REDACTED**

=====

## 12. Appendix F – Sample Install Record SD\*5.3\*620

NAME: SD\*5.3\*620

```

PACKAGE FILE LINK: SCHEDULING          DATE LOADED: JUL 21, 2014@16:35:47
STARTING PACKAGE: SD*5.3*620          INSTALL ORDER: 1
REQUIRED TO CONTINUE: NO              SETNAME: 0SD*5.3*620
STATUS: Install Completed              DISABLE OPTION DELAY: 0
INSTALLED BY: THOMPSON,ANDREW
INSTALL START TIME: JUL 21, 2014@16:40:22
ROUTINE INSTALL TIME: JUL 21, 2014@16:40:22
INSTALL COMPLETE TIME: JUL 21, 2014@16:40:23
DISTRIBUTION DATE: JUL 21, 2014        FILE COMMENT: SD*5.3*620 TEST v9
TEST#: 9
PRE-INIT CHECK POINTS: XPD PREINSTALL COMPLETED
  COMPLETED TIME: JUL 21, 2014@16:40:22
POST-INIT CHECK POINTS: XPD POSTINSTALL COMPLETED
  COMPLETED TIME: JUL 21, 2014@16:40:22
BUILD COMPONENT: OPTION                DATA TIME: JUL 21, 2014@16:40:22
  INSTALL ORDER: 18
BUILD COMPONENT: SECURITY KEY          DATA TIME: JUL 21, 2014@16:40:22
  INSTALL ORDER: 3
MESSAGES:

  Install Started for SD*5.3*620 :
      Jul 21, 2014@16:40:22

Build Distribution Date: Jul 21, 2014

Installing Routines:
      Jul 21, 2014@16:40:22

Installing PACKAGE COMPONENTS:

Installing SECURITY KEY

Installing OPTION
      Jul 21, 2014@16:40:22

Updating Routine file...

Updating KIDS files...

SD*5.3*620 Installed.
      Jul 21, 2014@16:40:23

Not a production UCI

NO Install Message sent
NAME: XP01                            ANSWER: 0
  PROMPT: Want KIDS to Rebuild Menu Trees Upon Completion of Install
  EXTERNAL ANSWER: NO
NAME: XP11                            ANSWER: 0
  PROMPT: Want KIDS to INHIBIT LOGONs during the install
  EXTERNAL ANSWER: NO
NAME: XPZ1                            ANSWER: 0
  PROMPT: Want to DISABLE Scheduled Options, Menu Options, and Protocols
  EXTERNAL ANSWER: NO
ROUTINES: SCRPPAHS

```

ROUTINES: SCRPPRAH  
ROUTINES: SCRPPPTA  
ROUTINES: SCRPPPTPA  
ROUTINES: SCRPTTEAM  
ROUTINES: SCRPTHST  
ROUTINES: SCRPTPHS  
ROUTINES: SCRPTPOS

## 13. Appendix G – Sample Install Record SD\*5.3\*603

NAME: SD\*5.3\*603                      PACKAGE FILE LINK: SCHEDULING  
DATE LOADED: MAR 04, 2015@19:20:40      STARTING PACKAGE: SD\*5.3\*603  
INSTALL ORDER: 1                      REQUIRED TO CONTINUE: NO  
SETNAME: 0SD\*5.3\*603                  STATUS: Install Completed  
DISABLE OPTION DELAY: 0              INSTALLED BY: THOMPSON,ANDREW  
INSTALL START TIME: MAR 04, 2015@19:21:57  
ROUTINE INSTALL TIME: MAR 04, 2015@19:21:57  
INSTALL COMPLETE TIME: MAR 04, 2015@19:23:30  
DISTRIBUTION DATE: MAR 04, 2015  
FILE COMMENT: Patch to Support PCMM Web ;Created on Mar 04, 2015@18:57:01  
FILE: STANDARD POSITION  
DATA DICTIONARY TIME: MAR 04, 2015@19:21:57  
DATA TIME: MAR 04, 2015@19:21:58  
FILE: OUTPATIENT PROFILE  
DATA DICTIONARY TIME: MAR 04, 2015@19:21:57  
FILE: PATIENT TEAM ASSIGNMENT  
DATA DICTIONARY TIME: MAR 04, 2015@19:21:57  
FILE: PATIENT TEAM POSITION ASSIGNMENT  
DATA DICTIONARY TIME: MAR 04, 2015@19:21:57  
FILE: POSITION ASSIGNMENT HISTORY  
DATA DICTIONARY TIME: MAR 04, 2015@19:21:57  
FILE: PCMM PATIENT EVENTS  
DATA DICTIONARY TIME: MAR 04, 2015@19:21:57  
FILE: OUTPATIENT ENCOUNTER  
DATA DICTIONARY TIME: MAR 04, 2015@19:21:57  
PRE-INIT CHECK POINTS: XPD PREINSTALL COMPLETED  
COMPLETED TIME: MAR 04, 2015@19:21:57  
PRE-INIT CHECK POINTS: XPD PREINSTALL STARTED  
COMPLETED TIME: MAR 04, 2015@19:21:57  
CALLBACK: EN^SD53I603  
POST-INIT CHECK POINTS: XPD POSTINSTALL COMPLETED  
COMPLETED TIME: MAR 04, 2015@19:23:30  
POST-INIT CHECK POINTS: XPD POSTINSTALL STARTED  
COMPLETED TIME: MAR 04, 2015@19:23:30  
CALLBACK: EN^SD53P603  
BUILD COMPONENT: SORT TEMPLATE              DATA TIME: MAR 04, 2015@19:21:58  
INSTALL ORDER: 6  
BUILD COMPONENT: OPTION                      DATA TIME: MAR 04, 2015@19:21:58  
INSTALL ORDER: 18  
BUILD COMPONENT: REMOTE PROCEDURE              DATA TIME: MAR 04, 2015@19:21:58  
INSTALL ORDER: 16  
MESSAGES:

Install Started for SD\*5.3\*603 :

Mar 04, 2015@19:21:57

Build Distribution Date: Mar 04, 2015

Installing Routines:

Mar 04, 2015@19:21:57

Running Pre-Install Routine: EN^SD53I603

Installing Data Dictionaries:

Mar 04, 2015@19:21:57

Installing Data:

Mar 04, 2015@19:21:58

Installing PACKAGE COMPONENTS:

Installing SORT TEMPLATE

Installing REMOTE PROCEDURE

Installing OPTION

Mar 04, 2015@19:21:58

Running Post-Install Routine: EN^SD53P603

- o WEB SERVICE 'PCMM-R GET PC INFO REST' addition/update succeeded.
- o WEB SERVER 'PCMMR' addition/update succeeded.
- o WEB SERVICE 'PCMM-R GET PC INFO REST' already registered to WEB SERVER 'PCMMR'
- o WEB SERVER 'PCMMR TEST' addition/update succeeded.
- o WEB SERVICE 'PCMM-R GET PC INFO REST' already registered to WEB SERVER 'PCMMR TEST'
- o WEB SERVER LOOKUP KEY 'PCMMR SERVER' addition/update succeeded.
- o WEB SERVER LOOKUP KEY 'PCMMR SERVER' pointed to WEB SERVER 'PCMMR'
- o WEB SERVER LOOKUP KEY 'PCMMR TEST SERVER' addition/update succeeded.
- o WEB SERVER LOOKUP KEY 'PCMMR TEST SERVER' pointed to WEB SERVER 'PCMMR TEST'
- o SCMC,APPLICATION PROXY user already exists.
- o Convert Status (.12) in Patient Team Position Assignment (404.43) from NA to IU has completed.
- o SCMC PCMM NIGHTLY TASK deleted from the Scheduled Options file.
- o Legacy PCMM menu options were marked Out-of-Order.
- o Legacy PCMM - SC PC PATIENT ASSIGN/UNASSIGN - protocol was disabled.

- o Legacy PCMM Menu Options have been placed Out of Order
- o New Person records with Secondary Menu Option SCMC PCMM GUI WORKSTATION changed to SCMC PCMMR WEB USER MENU

Delete the FTEXR Trigger in 404.52/.09

The FTEXR trigger does not exist - previously deleted.

- o Patient Team Position Assignment C cross reference already exists.
- o Submitting Build Outpatient Encounters ACOD Index to Taskman.
- o A Mailman message will be sent when it has completed.

Building Outpatient Encounters 'ACOD' index for child encounters.  
This job will be tasked to run in the background.  
A MailMan message will be sent to the installer upon completion.

Updating Routine file...

Updating KIDS files...

SD\*5.3\*603 Installed.  
Mar 04, 2015@19:23:30

Not a production UCI

NO Install Message sent

```

NAME: XP01                                ANSWER: 0
  PROMPT: Want KIDS to Rebuild Menu Trees Upon Completion of Install
  EXTERNAL ANSWER: NO
NAME: XPI1                                ANSWER: 0
  PROMPT: Want KIDS to INHIBIT LOGONs during the install
  EXTERNAL ANSWER: NO
NAME: XPZ1                                ANSWER: 0
  PROMPT: Want to DISABLE Scheduled Options, Menu Options, and Protocols
  EXTERNAL ANSWER: NO
ROUTINES: SCAPMC23
ROUTINES: SCMCDD1
ROUTINES: SCMCDDR
ROUTINES: SCMCDDR0
ROUTINES: SCMCDDR2
ROUTINES: SCMCDDR3
ROUTINES: SCMCENCT
ROUTINES: SCMCFPOS
ROUTINES: SCMCFTEE
ROUTINES: SCMCMHTC
ROUTINES: SCMCNPER
ROUTINES: SCMCOPT
ROUTINES: SCMCPAT
ROUTINES: SCMCTSK
ROUTINES: SCMCTSK2
ROUTINES: SCMCTSK5
ROUTINES: SCMCTSK6

```

ROUTINES: SCMCWS1  
ROUTINES: SCMCWS1A  
ROUTINES: SCMCWSUT  
ROUTINES: SD53I603  
ROUTINES: SD53P603  
ROUTINES: SDCOU

## 14. Appendix H – Sample Install Record OR\*3.0\*387

NAME: OR\*3.0\*387  
PACKAGE FILE LINK: ORDER ENTRY/RESULTS REPORTING  
DATE LOADED: SEP 05, 2014@15:03:32      STARTING PACKAGE: OR\*3.0\*387  
INSTALL ORDER: 1      REQUIRED TO CONTINUE: NO  
SETNAME: 00R\*3.0\*387      STATUS: Install Completed  
DISABLE OPTION DELAY: 0      INSTALLED BY: THOMPSON,ANDREW  
INSTALL START TIME: SEP 05, 2014@15:05:54  
ROUTINE INSTALL TIME: SEP 05, 2014@15:05:54  
INSTALL COMPLETE TIME: SEP 05, 2014@15:05:54  
DISTRIBUTION DATE: SEP 04, 2014      FILE COMMENT: OR\*3\*387 TEST v16  
TEST#: 16  
PRE-INIT CHECK POINTS: XPD PREINSTALL COMPLETED  
COMPLETED TIME: SEP 05, 2014@15:05:54  
POST-INIT CHECK POINTS: XPD POSTINSTALL COMPLETED  
COMPLETED TIME: SEP 05, 2014@15:05:54  
BUILD COMPONENT: REMOTE PROCEDURE      DATA TIME: SEP 05, 2014@15:05:54  
INSTALL ORDER: 16  
MESSAGES:  
  
    Install Started for OR\*3.0\*387 :  
        Sep 05, 2014@15:05:54  
  
Build Distribution Date: Sep 04, 2014  
  
Installing Routines:  
    Sep 05, 2014@15:05:54  
  
Installing PACKAGE COMPONENTS:  
  
Installing REMOTE PROCEDURE  
    Sep 05, 2014@15:05:54  
  
Updating Routine file...  
  
Updating KIDS files...  
  
OR\*3.0\*387 Installed.  
    Sep 05, 2014@15:05:54  
  
Not a production UCI  
  
NO Install Message sent  
NAME: XPI1      ANSWER: 0  
PROMPT: Want KIDS to INHIBIT LOGONs during the install  
EXTERNAL ANSWER: NO

NAME: XPZ1

ANSWER: 0

PROMPT: Want to DISABLE Scheduled Options, Menu Options, and Protocols

EXTERNAL ANSWER: NO

ROUTINES: ORWPT1

## **15. Appendix I – Check HealtheVet Web Service Client (HWSC) Configuration**

---

**NOTE: If needed, Appendix H includes additional information on the HealtheVet Web Services.**

---



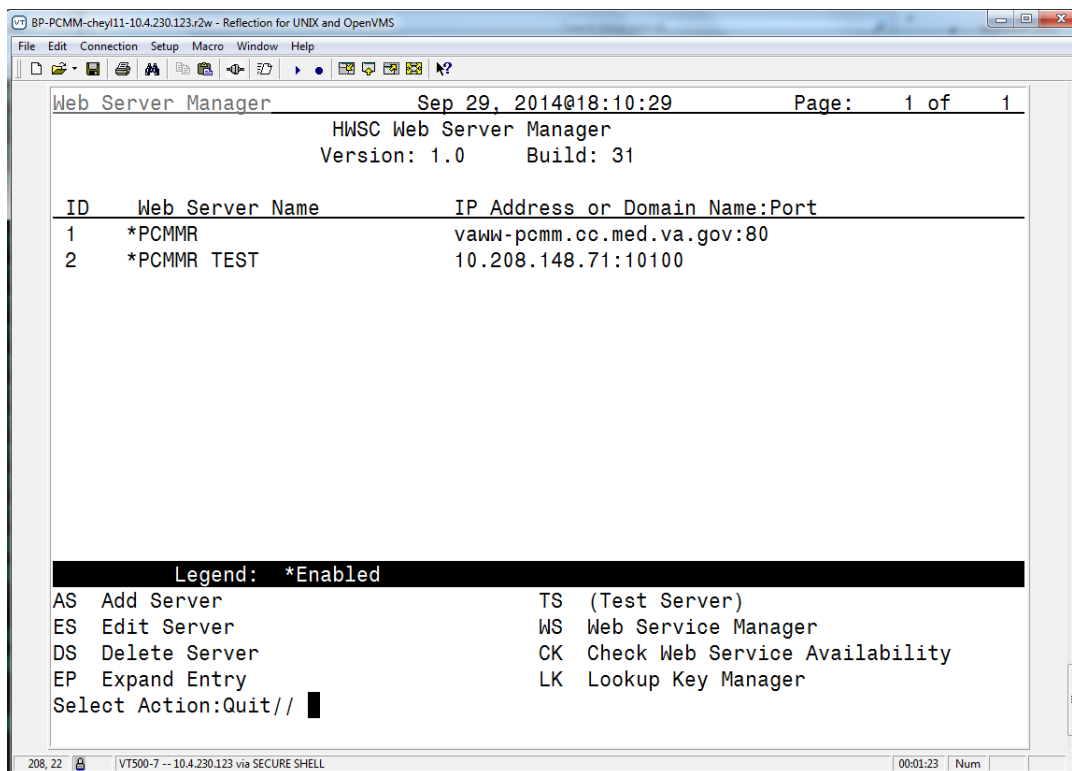
The post-install routine for patch SD\*5.3\*603 creates entries in the HWSC configuration files to support a web service call to PCMM Web. Two server definitions are created: one for production PCMM Web, and one for a development test system. In some circumstances, it may be necessary to change the server name and/or port number for the production connection. Follow the steps below to change the server name or port.

VISTA>D ^XUP

Setting up programmer environment  
This is a TEST account.

Terminal Type set to: C-VT320

Select OPTION NAME: **XOBW WEB SERVER MANAGER**      Web Server Manager  
Web Server Manager



Select Action:Quit// **ES** Edit Server  
Select Web Server: (1-2): **1**  
NAME: PCMMR//  
SERVER: **REDACTED** Replace  
PORT: 80//  
DEFAULT HTTP TIMEOUT: 30//  
Press Enter to not change any other values.